



Metal Switch Catalog **2024**

Reliance North America
30 Gick Road
Saratoga Springs, NY 12866
518.393.6911
information@RelianceNorthAmerica.com
www.RelianceNorthAmerica.com



2024 METAL SWITCH CATALOG

Proven Connectivity Quality: Over 70-year's supplying major global brands with private labeled product. RNA products will conform to CE, CSA, UL certifications and many other Certs as need by customers. Our facilities are ISO9001/ISO14001 certified; follows OHSAS18001/RoHS.

Broad Standard Product Offering: Large selection of, PCB, DIN Rail Mount, and Barrier Terminal Blocks that will cross to many of the major brands.

Value Strategy: Our customers enjoy RNA's High-Quality products, Super Competitive pricing, Quick delivery, US based Sales technical support and National and Regional Distribution.

Custom Solutions: RNA has unsurpassed in-house capabilities for product engineering with in-house testing lab, 110+ engineers, 90+ molding staff to provides customers with quick turn around on custom product designs or, standard product modifications.

Deep Technical Expertise: RNA has extensive experience and knowledge with Terminal Block Technologies and provides the needed engineering and sales support for our sales reps, distributors, and customers.

RNA strives to provides our customers with **QUALITY PRODUCTS, BETTER PRICING, BETTER DELIVERY, and BETTER SUPPORT** than all our competitors.

Full line catalogue links available online at: www.reliancenorthamerica.com

www.RelianceNorthAmerica.com



Model Explanation

Series Number	Mounting Hole Size	The Front Shape	Contact Configuration	Lamp Type	Terminal Type	Color of Lamp and Colorized Button	Lamp Voltage	The Crust Material	Color of Colorful push button's head or Case
YXGQ	★	■	— □	◇	/ ◆	/ ▲	/ ●	/ ★	
8 Φ8mm 12 Φ12mm 16 Φ16mm 19 Φ19mm 22 Φ22mm	B Domed F Flat Round H High Round P Flat C Concave M Mushroom push button	10 1NO	D Dot E Ring Em Buzzer with illumination	J Pin Terminal No letter means screw terminal.	R Red G Green Y Yellow O Orange B Blue W White	AC/DC6V AC/DC12V AC/DC24V AC/DC36V Other voltage can be made to order	N Nickel-plated Brass G Gold-plated Brass S Stainless Steel A Zn-al Alloy(Black) T Zn-al Alloy(Silver White)	R Red G Green O Blue B White N Black	

Note: Mushroom push button switch is just available for HBGQ16M-10D/J HBGQ16M-10/J

Note: Please carefully read the product specification, then select the appropriate code according to different symbols in the table.

Switch Structure Explanation

Type	Symbol	Diagram	Explanation
X			Switch with two terminal breakpoints slow moving contact Individual products can be customized Y-type normally closed switch, refer to product description.
Y			

LED Lamp Specifications

Lamp Type	Bi-directional LED lamp (AC DC Universal)	<p>Lamp Equivalent Circuit</p>
Rated Voltage	1.8V、2.8V、6V、12V、24V、36V	
Rated Current	15mA about 15mA	
Color	R G O B W	
Life	50000 hours (reference value)	

AC-DC Universal LED lamp, terminal differentiate between positive and negative; lamp beads built-in protection resistors, no external.

Note: Unidirectional DC LED lamp can be customized if needed; other voltage specifications could be special made

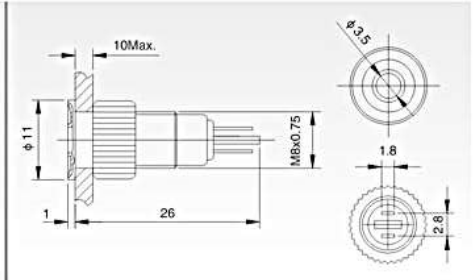
Installation Effect Preview



YXGQ8C-D/Δ/▲/N



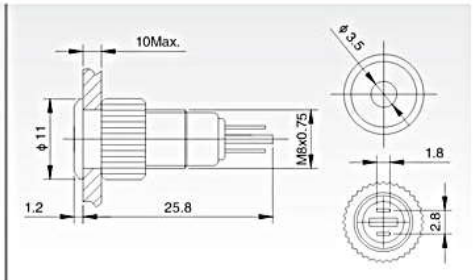
- Mounting Hole Size: $\phi 8\text{mm}$
- Voltage Class: $\leq 220\text{V}$
- Rated Current: 15mA
- Lamp Type: LED
- Lamp Color: Red / Green / Yellow / Orange / Blue / White
- The Crust Material: Nickel-plated Brass
- Protection Degree: IP67,IK10



YXGQ8F-D/Δ/▲/N



- Mounting Hole Size: $\phi 12\text{mm}$
- Voltage Class: $\leq 220\text{V}$
- Rated Current: 15mA
- Lamp Type: LED
- Lamp Color: Red / Green / Yellow / Orange / Blue / White
- The Crust Material: Nickel-plated Brass
- Protection Degree: IP67,IK10

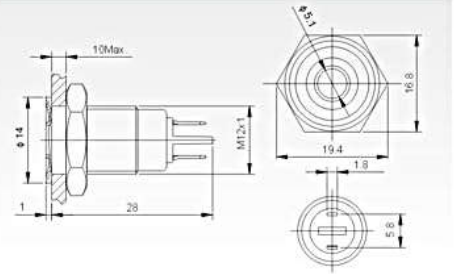


Specifications	YXGQ8C-D/Δ/▲/N	YXGQ8F-D/Δ/▲/N
Terminal Type	Pin Terminal (1.8×0.4mm)	Pin Terminal (1.8×0.4mm)
Dielectric Strength	1100VAC	1100VAC
Operating Temperature	-20℃ ~ +55℃	-20℃ ~ +55℃
Panel Thickness	1 ~ 10mm	1 ~ 10mm
Torque	5 ~ 14Nm	5 ~ 14Nm
Protection Degree	IP67,IK10	IP67,IK10
Material	Shade	PC
	Case	Nickel-plated Brass
	Base	PBT
Lamp Parameters	RoHS	Can be made to order
	Type	(LED) dot-illumination flat-concave
	Rated Voltage	2V/6V/12V/24V/36V 110V/220V
	Rated Current	about15mA about3mA
	Color	R G Y O B W
	Life	50000 hours

YXGQ12C-D/△/▲/N



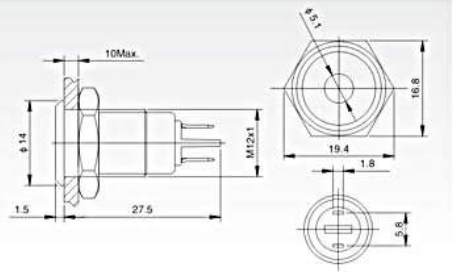
- Mounting Hole Size: Φ 12mm
- Voltage Class: \leq 220V
- Rated Current: 15mA
- Lamp Type: LED
- Lamp Color: Red / Green / Yellow / Orange / Blue / White
- The Crust Material: Nickel-plated Brass
- Protection Degree: IP67,IK10



YXGQ12F-D/△/▲/N



- Mounting Hole Size: Φ 12mm
- Voltage Class: \leq 220V
- Rated Current: 15mA
- Lamp Type: LED
- Lamp Color: Red / Green / Yellow / Orange / Blue / White
- The Crust Material: Nickel-plated Brass
- Protection Degree: IP67,IK10



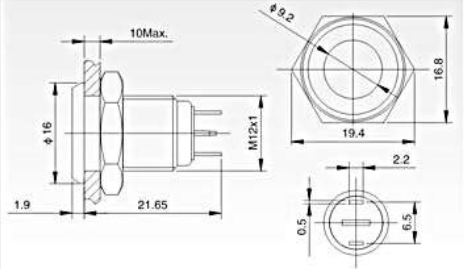
Specifications		YXGQ12C-D/△/▲/N	YXGQ12F-D/△/▲/N
Terminal Type		Pin Terminal (1.8 × 0.4mm)	Pin Terminal (1.8 × 0.4mm)
Dielectric Strength		2000VAC	2000VAC
Operating Temperature		-20°C ~ +55°C	-20°C ~ +55°C
Panel Thickness		1 ~ 10mm	1 ~ 10mm
Torque		5 ~ 14Nm	5 ~ 14Nm
Protection Degree		IP67,IK10	IP67,IK10
Material	Shade	PC	PC
	Case	Nickel-plated Brass	Nickel-plated Brass
	Base	PBT	PBT
RoHS		Can be made to order	Can be made to order
Lamp Parameters	Type	(LED) dot-illumination flat-concave	(LED) dot-illumination flat
	Rated Voltage	2V/6V/12V/24V/36V 110V/220V	2V/6V/12V/24V/36V 110V/220V
	Rated Current	about15mA about3mA	about15mA about3mA
	Color	R G Y O B W	R G Y O B W
	Life	50000 hours	50000 hours

YXGQ12F-D/J/Δ/▲/○

Signal lamp



- Mounting Hole Size: ϕ 12mm
- Voltage Class: \leq 220V
- Rated Current: 15mA
- Lamp Type: LED
- Lamp Color: Red / Green / Yellow / Orange / Blue / White
- The Crust Material: Nickel-plated Brass/Stainless Steel
- Protection Degree: IP67,IK10

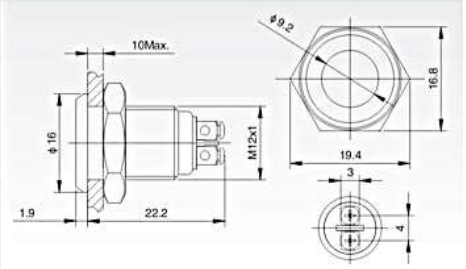


YXGQ12F-D/Δ/▲/○

Signal lamp



- Mounting Hole Size: ϕ 12mm
- Voltage Class: \leq 220V
- Rated Current: 15mA
- Lamp Type: LED
- Lamp Color: Red / Green / Yellow / Orange / Blue / White
- The Crust Material: Nickel-plated Brass/Stainless Steel
- Protection Degree: IP67,IK10

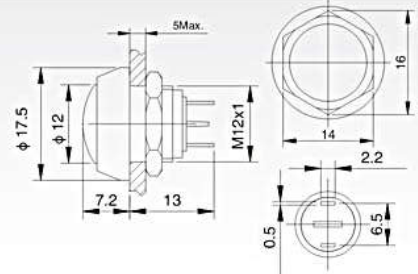


Specifications		YXGQ12F-D/J/Δ/▲/○		YXGQ12F-D/Δ/▲/○	
Terminal Type		Pin Terminal(2.0×0.5mm)		Screw Terminal	
Dielectric Strength		2000VAC		2000VAC	
Operating Temperature		-20℃ ~ +55℃		-20℃ ~ +55℃	
Panel Thickness		1 ~ 10mm		1 ~ 10mm	
Torque		5 ~ 14Nm		5 ~ 14Nm	
Protection Degree		IP67,IK10		IP67,IK10	
Material	Shade	PC		PC	
	外壳 Case	Stainless Steel/Nickel-plated Brass		Stainless Steel/Nickel-plated Brass	
	Base	PBT		PBT	
RoHS		Can be made to order		Can be made to order	
Lamp Parameters	Type	(LED) Flat dot		(LED) Flat dot	
	Rated Voltage	2V/6V/12V/24V/36V	110V/220V	2V/6V/12V/24V/36V	110V/220V
	Rated Current	about15mA	about3mA	about15mA	about3mA
	Color	R G Y O B W		R G Y O B W	
	Life	50000 hours		50000 hours	

☉ YXGQ12B-10/J/A/★



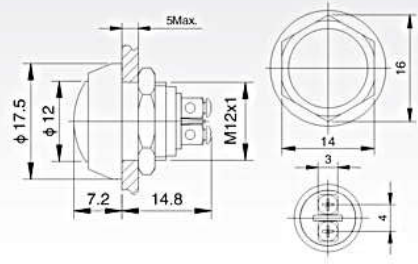
- ☉ Mounting Hole Size: ϕ 12mm
- ☉ Switch Rating: 2A/36VDC
- ☉ Contact Configuration: 1NO
- ☉ Operation Type: Momentary
- ☉ The Front Shape: Domed
- ☉ The Crust Material: Zn-al Alloy
- ☉ Protection Degree: IP65,IK08



☉ YXGQ12B-10/A/★



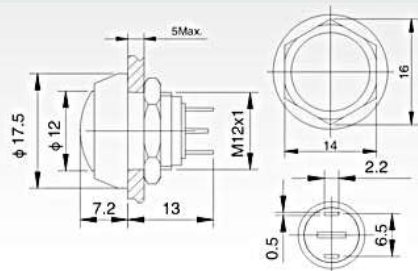
- ☉ Mounting Hole Size: ϕ 12mm
- ☉ Switch Rating: 2A/36VDC
- ☉ Contact Configuration: 1NO
- ☉ Operation Type: Momentary
- ☉ The Front Shape: Domed
- ☉ The Crust Material: Zn-al Alloy
- ☉ Protection Degree: IP65,IK08



☉ YXGQ12B-10/J/☉



- ☉ Mounting Hole Size: ϕ 12mm
- ☉ Switch Rating: 2A/36VDC
- ☉ Contact Configuration: 1NO
- ☉ Operation Type: Momentary
- ☉ The Front Shape: Domed
- ☉ The Crust Material: Nickel-plated Brass, Stainless Steel
- ☉ Protection Degree: IP65,IK08

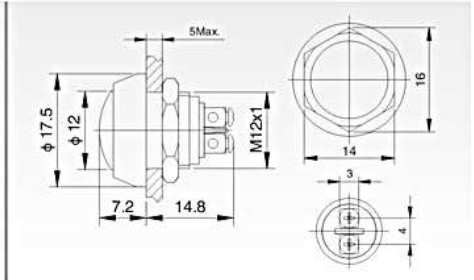


Specifications	YXGQ12B-10/J/A/★	YXGQ12B-10/A/★	YXGQ12B-10/J/☉
Terminal Type	Pin Terminal(2 × 0.5mm)	Screw Terminal	Pin Terminal(2 × 0.5mm)
Switch Type	X Two terminal breakpoints slow moving contact	X Two terminal breakpoints slow moving contact	X Two terminal breakpoints slow moving contact
Switch Specifications	2A/36VDC	2A/36VDC	2A/36VDC
Contact Resistance	≤ 50m Ω	≤ 50m Ω	≤ 50m Ω
Insulation Resistance	≥ 1000M Ω	≥ 1000M Ω	≥ 1000M Ω
Dielectric Strength	2000VAC	2000VAC	2000VAC
Operating Temperature	-20℃ ~ +55℃	-20℃ ~ +55℃	-20℃ ~ +55℃
Mechanical Life	100 >1,000,000 times	100 >1,000,000 times	100 >1,000,000 times
Electrical Life	20 >200,000 times	20 >200,000 times	20 >200,000 times
Panel Thickness	1 ~ 5mm	1 ~ 5mm	1 ~ 10mm
Torque	5 ~ 14Nm	5 ~ 14Nm	5 ~ 14Nm
Operating Pressure	About 5N	About 5N	About 4N
Operating Stroke	About 2.5 mm	About 2.5 mm	About 2.5 mm
Protection Degree	IP65,IK08	IP65,IK08	IP65,IK08
Material	Contact	Silver Alloy	Silver Alloy
	Button	PBT	PBT
	Case	Zn-al Alloy	Zn-al Alloy
	Base	PBT	PBT
RoHS	Can be made to order	Can be made to order	Can be made to order
Head Color	R G Y O B W N	R G Y O B W N	CD Stainless Steel; Mirror Surface, CD Pattern Nickel-plated Brass, Stainless Steel

YXGQ12B-10/○



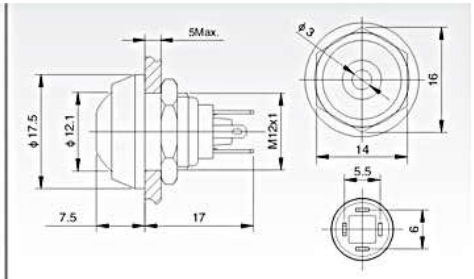
- Mounting Hole Size: $\phi 12\text{mm}$
- Switch Rating: 2A/36VDC
- Contact Configuration: 1NO
- Operation Type: Momentary
- The Front Shape: Domed
- The Crust Material: Nickel-plated Brass, Stainless Steel
- Protection Degree: IP65,IK08



YXGQ12B-10D/J/△/▲/A/★



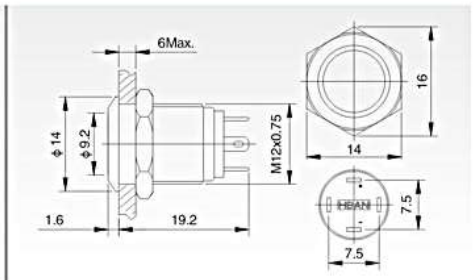
- Mounting Hole Size: $\phi 12\text{mm}$
- Switch Rating: 2A/36VDC
- Contact Configuration: 1NO
- Operation Type: Momentary
- The Crust Material: Zn-al Alloy
- illuminated type: Dot
- Protection Degree: IP65,IK08



YXGQ12F-10/J/○



- Mounting Hole Size: $\phi 12\text{mm}$
- Switch Rating: 2A/36VDC
- Contact Configuration: 1NO
- Operation Type: Momentary
- The Front Shape: Flat
- The Crust Material: Nickel-plated Brass, Stainless Steel
- Protection Degree: IP65,IK08

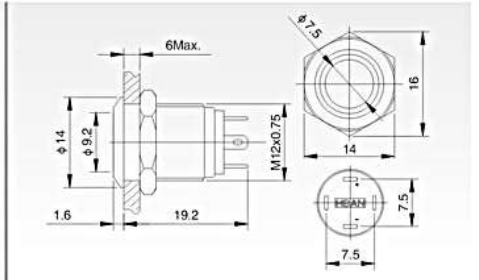


Specifications	YXGQ12B-10/○	YXGQ12B-10D/J/△/▲/A/★	YXGQ12F-10/J/○
Terminal Type	Screw Terminal	Pin Terminal(2 × 0.5mm)	Pin Terminal(2 × 0.5mm)
Switch Type	X Two terminal breakpoints slow moving contact	X Two terminal breakpoints slow moving contact	X Two terminal breakpoints slow moving contact
Switch Specifications	2A/36VDC	2A/36VDC	2A/36VDC
Contact Resistance	$\leq 50\text{m}\Omega$	$\leq 50\text{m}\Omega$	$\leq 50\text{m}\Omega$
Insulation Resistance	$\geq 1000\text{M}\Omega$	$\geq 1000\text{M}\Omega$	$\geq 1000\text{M}\Omega$
Dielectric Strength	2000VAC	2000VAC	2000VAC
Operating Temperature	$-20^{\circ}\text{C} \sim +55^{\circ}\text{C}$	$-20^{\circ}\text{C} \sim +55^{\circ}\text{C}$	$-20^{\circ}\text{C} \sim +55^{\circ}\text{C}$
Mechanical Life	100 >1,000,000 times	100 >1,000,000 times	100 >1,000,000 times
Electrical Life	20 >200,000 times	20 >200,000 times	20 >200,000 times
Panel Thickness	1 ~ 5mm	1 ~ 10mm	1 ~ 5mm
Torque	5 ~ 14Nm	5 ~ 14Nm	5 ~ 14Nm
Operating Pressure	About 5N	About 5N	About 5N
Operating Stroke	About 2.5 mm	About 2.5 mm	About 1.8 mm
Protection Degree	IP65,IK08	IP65,IK08	IP65,IK08
Material	Contact	Silver Alloy	Silver Alloy
	Button	CD Stainless Steel: Mirror Surface, CD Pattern	PBT
	Case	Nickel-plated Brass, Stainless Steel	Zn-al Alloy
	Base	PBT	PBT
RoHS	Can be made to order	Can be made to order	可定制 Can be made to order
Head Color		R G Y O B W	

YXGQ12F-10E/J/Δ/▲/◎



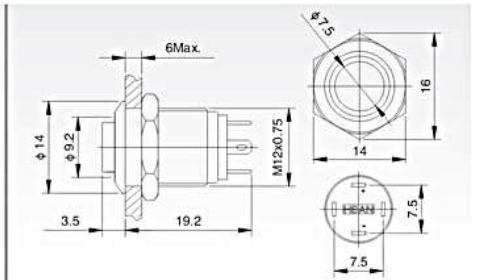
- Mounting Hole Size: $\phi 12\text{mm}$
- Switch Rating: 2A/36VDC
- Contact Configuration: 1NO
- Operation Type: Momentary
- The Front Shape: Flat Round
- The Crust Material: Nickel-plated Brass, Stainless Steel
- Protection Degree: IP65,IK08



YXGQ12H-10E/J/Δ/▲/◎



- Mounting Hole Size: $\phi 12\text{mm}$
- Switch Rating: 2A/36VDC
- Contact Configuration: 1NO
- Operation Type: Momentary
- The Front Shape: High Round
- The Crust Material: Nickel-plated Brass, Stainless Steel
- Protection Degree: IP65,IK08

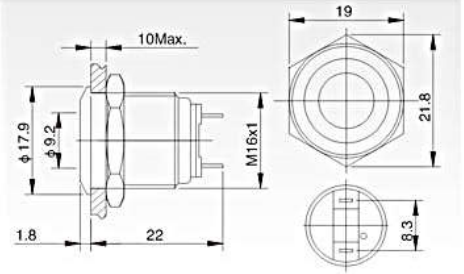


Specifications	YXGQ12F-10E/J/Δ/▲/◎	YXGQ12H-10E/J/Δ/▲/◎					
Terminal Type	Pin Terminal(2 × 0.5mm)	Pin Terminal(2 × 0.5mm)					
Switch Type	X Two terminal breakpoints slow moving contact	X Two terminal breakpoints slow moving contact					
Switch Specifications	2A/36VDC	2A/36VDC					
Contact Resistance	≤ 50mΩ	≤ 50mΩ					
Insulation Resistance	≥ 1000MΩ	≥ 1000MΩ					
Dielectric Strength	2000 VAC	2000 VAC					
Operating Temperature	-20℃ ~ +55℃	-20℃ ~ +55℃					
Mechanical Life	100 >1,000,000 times	100 >1,000,000 times					
Electrical Life	20 >200,000 times	20 >200,000 times					
Panel Thickness	1 ~ 10mm	1 ~ 10mm					
Torque	5 ~ 14Nm	5 ~ 14Nm					
Operating Pressure	About 4N	About 4N					
Operating Stroke	About 1.8mm	About 1.8mm					
Protection Degree	IP65,IK08	IP65,IK08					
Material	Contact	Silver Alloy					
	Button	CD Stainless Steel: Mirror Surface, CD Pattern					
	Case	Stainless Steel/Nickel-plated Brass					
	Base	PBT					
	RoHS	Can be made to order					
Lamp Parameters	Type	Ring-illumination(LED)					
	Rated Voltage	2V/6V/12V/24V/36V					
	Color	R G Y O B W					
	Life	50000 Hours					
Current Limiting Resistor Configuration Table (Recommended Value)	I	Rated Voltage U	6V	12V	24V	36V	Formula $R = \frac{U-U_e}{I_e}$
	Current Limiting Resistor	R Y O	210Ω, 1/4W	510Ω, 1/2W	1.2kΩ, 3/4W	2.2kΩ, 1W	
		G B W	160Ω, 1/4W	460Ω, 1/2W	1.2kΩ, 3/4W	2.2kΩ, 1W	

YXGQ16F-D/J/Δ/▲/◎



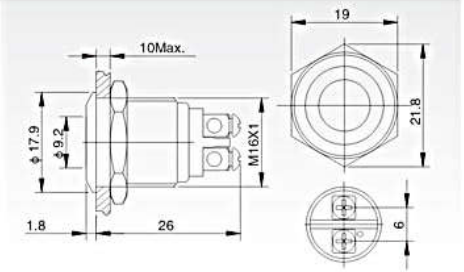
- Mounting Hole Size: Φ 16mm
- Voltage Class: \leq 220V
- Rated Current: 15mA
- Lamp Type: LED
- Lamp Color: Red / Green / Yellow / Orange / Blue / White
- The Crust Material: Nickel-plated Brass, Stainless Steel
- Protection Degree: IP67,IK10



YXGQ16F-D/Δ/▲/◎



- Mounting Hole Size: Φ 16mm
- Voltage Class: \leq 220V
- Rated Current: 15mA
- Lamp Type: LED
- Lamp Color: Red / Green / Yellow / Orange / Blue / White
- The Crust Material: Nickel-plated Brass, Stainless Steel
- Protection Degree: IP67,IK10

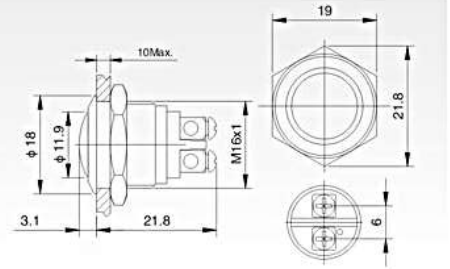


Specifications		YXGQ16F-D/J/Δ/▲/◎	YXGQ16F-D/Δ/▲/◎
Terminal Type		Pin Terminal(2.0×0.5mm)	Screw Terminal
Dielectric Strength		2000VAC	2000VAC
Operating Temperature		-20℃ ~ +55℃	-20℃ ~ +55℃
Panel Thickness		1 ~ 10mm	1 ~ 10mm
Torque		5 ~ 14Nm	5 ~ 14Nm
Protection Degree		IP67,IK10	IP67,IK10
Material	Shade	PC	PC
	Case	Stainless Steel/Nickel-plated Brass	Stainless Steel/Nickel-plated Brass
	Base	PBT	PBT
	RoHS	Can be made to order	Can be made to order
Lamp Parameters	Type	(LED) Flat dot	(LED) Flat dot
	Rated Voltage	2V/6V/12V/24V/36V 110V/220V	2V/6V/12V/24V/36V 110V/220V
	Rated Current	about15mA about3mA	about15mA about3mA
	Color	R G Y O B W	R G Y O B W
	Life	50000 hours	50000 hours

YXGQ16B-10/



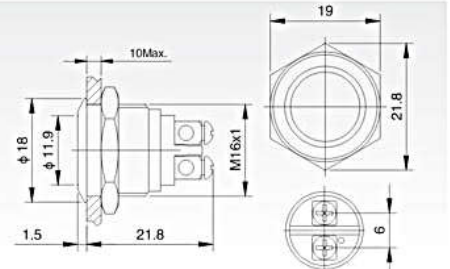
- Mounting Hole Size: $\phi 16\text{mm}$
- Switch Rating: 2A/36VDC
- Contact Configuration: 1NO(1NC can be custom made)
- Operation Type: Momentary
- The Front Shape: Domed
- The Crust Material: Stainless Steel/Nickel-plated Brass
- Protection Degree: IP65,IK08



YXGQ16F-10/



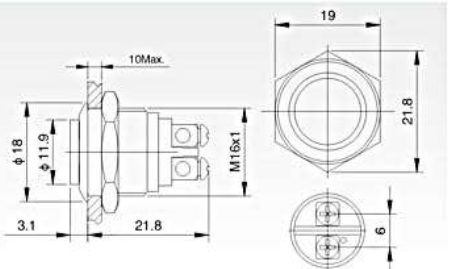
- Mounting Hole Size: $\phi 16\text{mm}$
- Switch Rating: 2A/36VDC
- Contact Configuration: 1NO(1NC can be custom made)
- Operation Type: Momentary
- The Front Shape: Flat Round
- The Crust Material: Stainless Steel/Nickel-plated Brass
- Protection Degree: IP65,IK08



YXGQ16H-10/



- Mounting Hole Size: $\phi 16\text{mm}$
- Switch Rating: 2A/36VDC
- Contact Configuration: 1NO(1NC can be custom made)
- Operation Type: Momentary
- The Front Shape: High Round
- The Crust Material: Stainless Steel/Nickel-plated Brass
- Protection Degree: IP65,IK08

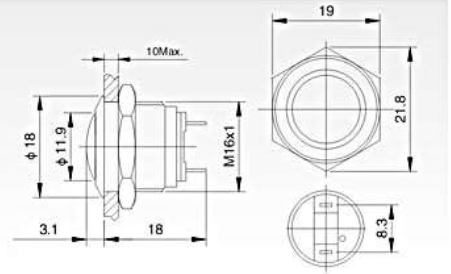


Specifications	YXGQ16B-10/	YXGQ16F-10/	YXGQ16H-10/	
The Front Shape	Domed	Flat Round	High Round	
Terminal Type	Screw Terminal	Screw Terminal	Screw Terminal	
Switch Type	X (Two terminal breakpoints slow moving contact)	X (Two terminal breakpoints slow moving contact)	X (Two terminal breakpoints slow moving contact)	
Switch Specifications	2A/36VDC	2A/36VDC	2A/36VDC	
Contact Resistance	$\leq 50\text{m}\Omega$	$\leq 50\text{m}\Omega$	$\leq 50\text{m}\Omega$	
Insulation Resistance	$\geq 1000\text{M}\Omega$	$\geq 1000\text{M}\Omega$	$\geq 1000\text{M}\Omega$	
Dielectric Strength	2000VAC	2000VAC	2000VAC	
Operating Temperature	$-20^\circ\text{C} \sim +55^\circ\text{C}$	$-20^\circ\text{C} \sim +55^\circ\text{C}$	$-20^\circ\text{C} \sim +55^\circ\text{C}$	
Mechanical Life	100万次以上 >1,000,000 times	100 >1,000,000 times	100万次以上 >1,000,000 times	
Electrical Life	20万次以上 >200,000 times	20 >200,000 times	20万次以上 >200,000 times	
Panel Thickness	1 ~ 6mm	1 ~ 6mm	1 ~ 6mm	
Torque	5 ~ 14Nm	5 ~ 14Nm	5 ~ 14Nm	
Operating Pressure	about 4N	about 4N	about 4N	
Operating Stroke	about 1.5mm	about 1.5mm	about 1.5mm	
Protection Degree	IP65,IK08	IP65,IK08	IP65,IK08	
Material	Contact	Silver Alloy	Silver Alloy	Silver Alloy
	Button	CD stainless Steel; Mirror Surface, CD Pattern	CD stainless Steel; Mirror Surface, CD Pattern	CD stainless Steel; Mirror Surface, CD Pattern
	Case	CD stainless Steel; Mirror Surface, CD Pattern Nickel-plated Brass	CD stainless Steel; Mirror Surface, CD Pattern Nickel-plated Brass	CD stainless Steel; Mirror Surface, CD Pattern Nickel-plated Brass
	Base	PBT	PBT	PBT
	RoHS	Can be made to order	Can be made to order	Can be made to order

YXGQ16B-10/J



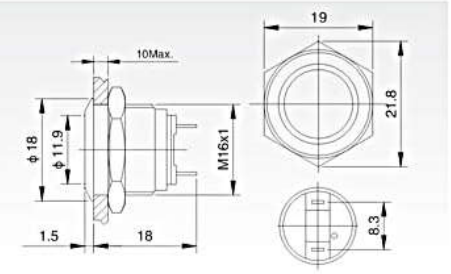
- Mounting Hole Size: $\phi 16\text{mm}$
- Switch Rating: 2A/36VDC
- Contact Configuration: 1NO(1NC can be custom made)
- Operation Type: Momentary
- The Front Shape: Domed
- The Crust Material: Stainless Steel/Nickel-plated Brass
- Protection Degree: IP65,IK08



YXGQ16F-10/J



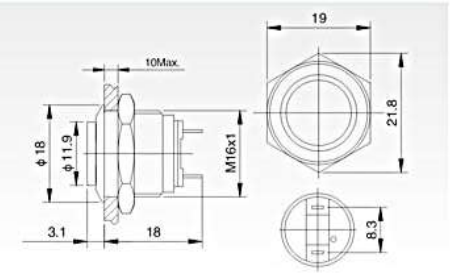
- Mounting Hole Size: $\phi 16\text{mm}$
- Switch Rating: 2A/36VDC
- Contact Configuration: 1NO(1NC can be custom made)
- Operation Type: Momentary
- The Front Shape: Flat Round
- The Crust Material: Stainless Steel/Nickel-plated Brass
- Protection Degree: IP65,IK08



YXGQ16H-10/J



- Mounting Hole Size: $\phi 16\text{mm}$
- Switch Rating: 2A/36VDC
- Contact Configuration: 1NO(1NC can be custom made)
- Operation Type: Momentary
- The Front Shape: High Round
- The Crust Material: Stainless Steel/Nickel-plated Brass
- Protection Degree: IP65,IK08

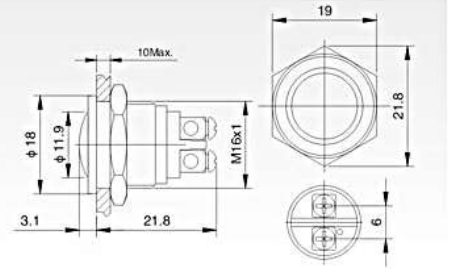


Specifications	YXGQ16B-10/J	YXGQ16F-10/J	YXGQ16H-10/J
The Front Shape	Domed	Flat Round	High Round
Terminal Type	Pin Terminal(2 x 0.5mm)	Pin Terminal(2 x 0.5mm)	Pin Terminal(2 x 0.5mm)
Switch Type	X (Two terminal breakpoints slow moving contact)	X (Two terminal breakpoints slow moving contact)	X (Two terminal breakpoints slow moving contact)
Switch Specifications	2A/36VDC	2A/36VDC	2A/36VDC
Contact Resistance	$\leq 50\text{m}\Omega$	$\leq 50\text{m}\Omega$	$\leq 50\text{m}\Omega$
Insulation Resistance	$\geq 1000\text{M}\Omega$	$\geq 1000\text{M}\Omega$	$\geq 1000\text{M}\Omega$
Dielectric Strength	2000VAC	2000VAC	2000VAC
Operating Temperature	$-20^{\circ}\text{C} \sim +55^{\circ}\text{C}$	$-20^{\circ}\text{C} \sim +55^{\circ}\text{C}$	$-20^{\circ}\text{C} \sim +55^{\circ}\text{C}$
Mechanical Life	100 >1,000,000 times	100 >1,000,000 times	100 >1,000,000 times
Electrical Life	20万次以上 >200,000 times	20万次以上 >200,000 times	20 >200,000 times
Panel Thickness	1 ~ 6mm	1 ~ 6mm	1 ~ 6mm
Torque	5 ~ 14Nm	5 ~ 14Nm	5 ~ 14Nm
Operating Pressure	about 4N	about 4N	about 4N
Operating Stroke	about 1.5mm	about 1.5mm	about 1.5mm
Protection Degree	IP65,IK08	IP65,IK08	IP65,IK08
Material	Contact	Silver Alloy	Silver Alloy
	Button	CD tainless Steel; Mirror Surface, CD Pattern	CD tainless Steel; Mirror Surface, CD Pattern
	Case	CD tainless Steel; Mirror Surface, CD Pattern Nickel-plated Brass	CD tainless Steel; Mirror Surface, CD Pattern Nickel-plated Brass
	Base	PBT	PBT
RoHS	Can be made to order	Can be made to order	Can be made to order

YXGQ16PB-10/



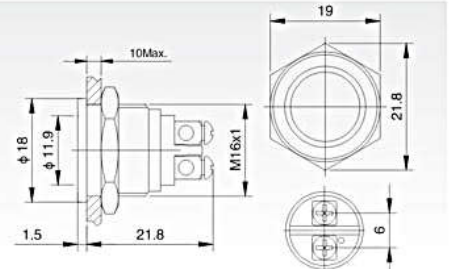
- Mounting Hole Size: $\phi 16\text{mm}$
- Switch Rating: 2A/36VDC
- Contact Configuration: 1NO(1NC can be custom made)
- Operation Type: Momentary
- The Front Shape: Domed
- The Crust Material: Stainless Steel/Nickel-plated Brass
- Protection Degree: IP65,IK08



YXGQ16PF-10/



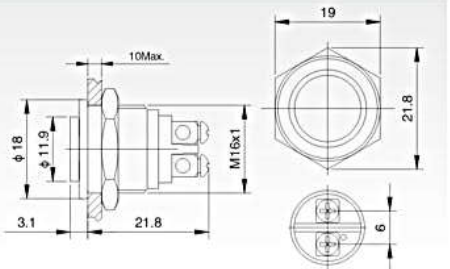
- Mounting Hole Size: $\phi 16\text{mm}$
- Switch Rating: 2A/36VDC
- Contact Configuration: 1NO(1NC can be custom made)
- Operation Type: Momentary
- The Front Shape: Flat Round
- The Crust Material: Stainless Steel/Nickel-plated Brass
- Protection Degree: IP65,IK08



YXGQ16PH-10/



- Mounting Hole Size: $\phi 16\text{mm}$
- Switch Rating: 2A/36VDC
- Contact Configuration: 1NO(1NC can be custom made)
- Operation Type: Momentary
- The Front Shape: High Round
- The Crust Material: Stainless Steel/Nickel-plated Brass
- Protection Degree: IP65,IK08

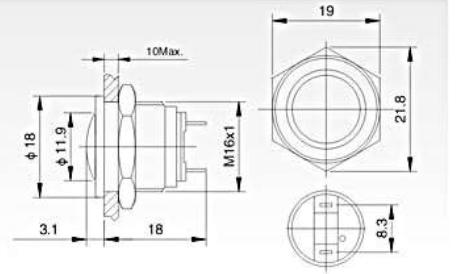


Specifications	YXGQ16PB-10/	YXGQ16PF-10/	YXGQ16PH-10/	
The Front Shape	Domed	Flat Round	High Round	
Terminal Type	Screw Terminal	Screw Terminal	Screw Terminal	
Switch Type	X <small>(Two terminal breakpoints slow moving contact)</small>	X <small>(Two terminal breakpoints slow moving contact)</small>	X <small>(Two terminal breakpoints slow moving contact)</small>	
Switch Specifications	2A/36VDC	2A/36VDC	2A/36VDC	
Contact Resistance	$\leq 50\text{m}\Omega$	$\leq 50\text{m}\Omega$	$\leq 50\text{m}\Omega$	
Insulation Resistance	$\geq 1000\text{M}\Omega$	$\geq 1000\text{M}\Omega$	$\geq 1000\text{M}\Omega$	
Dielectric Strength	2000VAC	2000VAC	2000VAC	
Operating Temperature	$-20^{\circ}\text{C} \sim +55^{\circ}\text{C}$	$-20^{\circ}\text{C} \sim +55^{\circ}\text{C}$	$-20^{\circ}\text{C} \sim +55^{\circ}\text{C}$	
Mechanical Life	100 >1,000,000 times	100 >1,000,000 times	100 >1,000,000 times	
Electrical Life	20 >200,000 times	20 >200,000 times	20 >200,000 times	
Panel Thickness	1 ~ 6mm	1 ~ 6mm	1 ~ 6mm	
Torque	5 ~ 14Nm	5 ~ 14Nm	5 ~ 14Nm	
Operating Pressure	about 4N	about 4N	about 4N	
Operating Stroke	about 1.5mm	about 1.5mm	about 1.5mm	
Protection Degree	IP65,IK08	IP65,IK08	IP65,IK08	
Material	Contact	Silver Alloy	Silver Alloy	Silver Alloy
	Button	CD stainless Steel; Mirror Surface, CD Pattern	CD stainless Steel; Mirror Surface, CD Pattern	CD stainless Steel; Mirror Surface, CD Pattern
	Case	CD stainless Steel; Mirror Surface, CD Pattern Nickel-plated Brass	CD stainless Steel; Mirror Surface, CD Pattern Nickel-plated Brass	CD stainless Steel; Mirror Surface, CD Pattern Nickel-plated Brass
	Base	PBT	PBT	PBT
	RoHS	Can be made to order	Can be made to order	Can be made to order

YXGQ16PB-10/J/



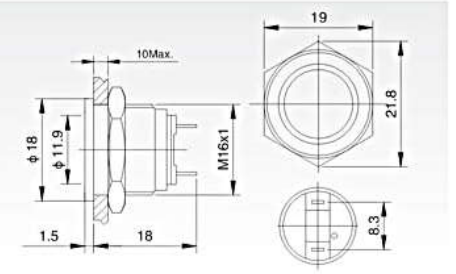
- Mounting Hole Size: $\phi 16\text{mm}$
- Switch Rating: 2A/36VDC
- Contact Configuration: 1NO(1NC can be custom made)
- Operation Type: Momentary
- The Front Shape: Domed
- The Crust Material: Stainless Steel Nickel-plated Brass
- Protection Degree: IP65,IK08



YXGQ16PF-10/J/



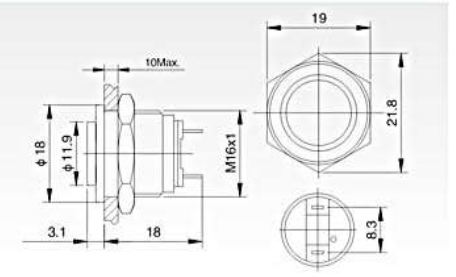
- Mounting Hole Size: $\phi 16\text{mm}$
- Switch Rating: 2A/36VDC
- Contact Configuration: 1NO(1NC can be custom made)
- Operation Type: Momentary
- The Front Shape: Flat Round
- The Crust Material: Stainless Steel Nickel-plated Brass
- Protection Degree: IP65,IK08



YXGQ16PH-10/J/



- Mounting Hole Size: $\phi 16\text{mm}$
- Switch Rating: 2A/36VDC
- Contact Configuration: 1NO(1NC can be custom made)
- Operation Type: Momentary
- The Front Shape: High Round
- The Crust Material: Stainless Steel Nickel-plated Brass
- Protection Degree: IP65,IK08

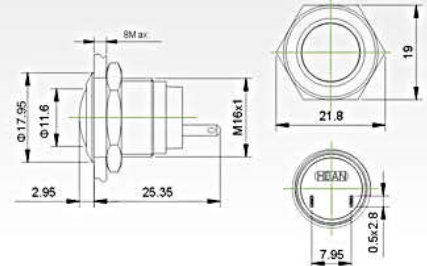


Specifications		YXGQ16PB-10/J/	YXGQ16PF-10/J/	YXGQ16PH-10/J/
The Front Shape		Domed	Flat Round	High Round
Terminal Type		Pin Terminal(2 x 0.5mm)		Pin Terminal(2 x 0.5mm)
Switch Type		X	X	X
Switch Specifications		2A/36VDC	2A/36VDC	2A/36VDC
Contact Resistance		$\leq 50\text{m}\Omega$	$\leq 50\text{m}\Omega$	$\leq 50\text{m}\Omega$
Insulation Resistance		$\geq 1000\text{M}\Omega$	$\geq 1000\text{M}\Omega$	$\geq 1000\text{M}\Omega$
Dielectric Strength		2000VAC	2000VAC	2000VAC
Operating Temperature		$-20^{\circ}\text{C} \sim +55^{\circ}\text{C}$	$-20^{\circ}\text{C} \sim +55^{\circ}\text{C}$	$-20^{\circ}\text{C} \sim +55^{\circ}\text{C}$
Mechanical Life		100 >1,000,000 times	100 >1,000,000 times	100 >1,000,000 times
Electrical Life		20 >200,000 times	20 >200,000 times	20 >200,000 times
Panel Thickness		1 ~ 6mm	1 ~ 6mm	1 ~ 6mm
Torque		5 ~ 14Nm	5 ~ 14Nm	5 ~ 14Nm
Operating Pressure		about 4N	about 4N	about 4N
Operating Stroke		about 1.5mm	about 1.5mm	about 1.5mm
Protection Degree		IP65,IK08	IP65,IK08	IP65,IK08
Material	Contact	Silver Alloy	Silver Alloy	Silver Alloy
	Button	CD tainless Steel; Mirror Surface, CD Pattern	CD tainless Steel; Mirror Surface, CD Pattern	CD纹 tainless Steel; Mirror Surface, CD Pattern
	Case	CD tainless Steel; Mirror Surface, CD Pattern Nickel-plated Brass	CD tainless Steel; Mirror Surface, CD Pattern Nickel-plated Brass	CD tainless Steel; Mirror Surface, CD Pattern Nickel-plated Brass
	Base	PBT	PBT	PBT
	RoHS	Can be made to order	可定制 Can be made to order	Can be made to order

YXGQ16B-10Z/J



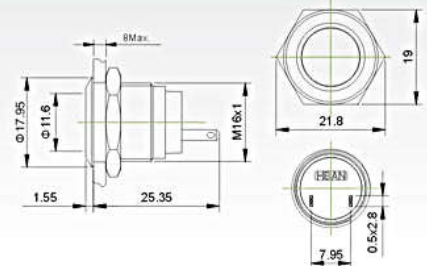
- Mounting Hole Size: $\phi 16\text{mm}$
- Switch Rating: 2A/36VDC
- Contact Configuration: 1NO(1NC can be custom made)
- Operation Type: Momentary
- The Front Shape: Domed
- The Crust Material: Stainless Steel/Nickel-plated Brass
- Protection Degree: IP65,IK08



YXGQ16F-10Z/J



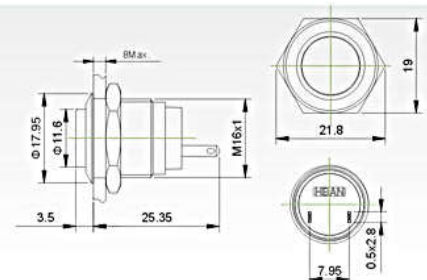
- Mounting Hole Size: $\phi 16\text{mm}$
- Switch Rating: 2A/36VDC
- Contact Configuration: 1NO(1NC can be custom made)
- Operation Type: Momentary
- The Front Shape: Flat Round
- The Crust Material: Stainless Steel/Nickel-plated Brass
- Protection Degree: IP65,IK08



YXGQ16H-10Z/J



- Mounting Hole Size: $\phi 16\text{mm}$
- Switch Rating: 2A/36VDC
- Contact Configuration: 1NO(1NC can be custom made)
- Operation Type: Momentary
- The Front Shape: High Round
- The Crust Material: Stainless Steel/Nickel-plated Brass
- Protection Degree: IP65,IK08



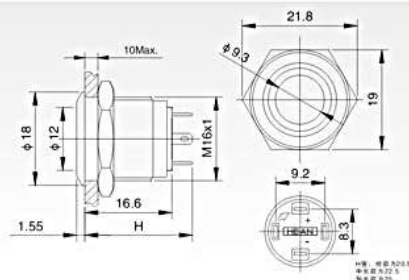
Specifications	YXGQ16B-10Z/J	YXGQ16F-10Z/J	YXGQ16H-10Z/J
The Front Shape	Domed	Flat Round	High Round
Terminal Type	Pin Terminal(2 x 0.5mm)	Pin Terminal(2 x 0.5mm)	Pin Terminal(2 x 0.5mm)
Switch Type	X (Two terminal breakpoints slow moving contact)	X (Two terminal breakpoints slow moving contact)	X (Two terminal breakpoints slow moving contact)
Switch Specifications	2A/36VDC	2A/36VDC	2A/36VDC
Contact Resistance	$\leq 50\text{m}\Omega$	$\leq 50\text{m}\Omega$	$\leq 50\text{m}\Omega$
Insulation Resistance	$\geq 1000\text{M}\Omega$	$\geq 1000\text{M}\Omega$	$\geq 1000\text{M}\Omega$
Dielectric Strength	2000VAC	2000VAC	2000VAC
Operating Temperature	$-20^{\circ}\text{C} \sim +55^{\circ}\text{C}$	$-20^{\circ}\text{C} \sim +55^{\circ}\text{C}$	$-20^{\circ}\text{C} \sim +55^{\circ}\text{C}$
Mechanical Life	100 >1,000,000 times	100 >1,000,000 times	100 >1,000,000 times
Electrical Life	20 >200,000 times	20 >200,000 times	20 >200,000 times
Panel Thickness	1 ~ 6mm	1 ~ 6mm	1 ~ 6mm
Torque	5 ~ 14Nm	5 ~ 14Nm	5 ~ 14Nm
Operating Pressure	about 4N	about 4N	about 4N
Operating Stroke	about 1.5mm	about 1.5mm	about 1.5mm
Protection Degree	IP65,IK08	IP65,IK08	IP65,IK08
Material	Contact	Silver Alloy	Silver Alloy
	Button	CD tainless Steel; Mirror Surface, CD Pattern	CD tainless Steel; Mirror Surface, CD Pattern
	Case	CD tainless Steel; Mirror Surface, CD Pattern Nickel-plated Brass	CD tainless Steel; Mirror Surface, CD Pattern Nickel-plated Brass
	Base	PBT	PBT
RoHS	Can be made to order	Can be made to order	Can be made to order

YXGQ16F-10E/J/Δ/▲/⊙

Ring-illumination flat switch



- Mounting Hole Size: Φ 16mm
- Switch Rating: 2A/36VDC
- Contact Configuration: 1NO(1NC can be custom made)
- Operation Type: Momentary
- The Front Shape: Ring
- The Crust Material: Stainless Steel/Nickel-plated Brass
- Protection Degree: IP65,IK08

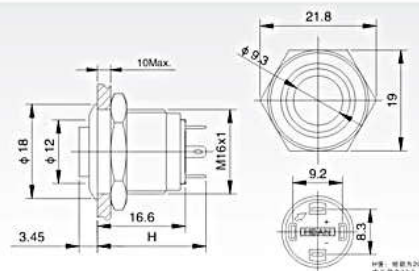


YXGQ16H-10E/J/Δ/▲/⊙

Ring-illumination high switch



- Mounting Hole Size: Φ 16mm
- Switch Rating: 2A/36VDC
- Contact Configuration: 1NO(1NC can be custom made)
- Operation Type: Momentary
- The Front Shape: Ring
- The Crust Material: Stainless Steel/Nickel-plated Brass
- Protection Degree: IP65,IK08



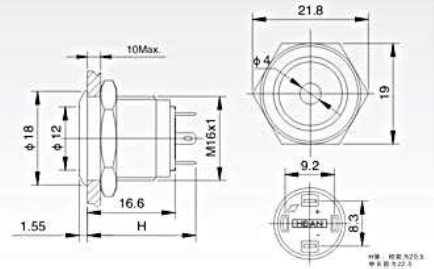
Specifications		YXGQ16F-10E/J/Δ/▲/⊙			YXGQ16H-10E/J/Δ/▲/⊙				
The Front Shape		Flat Round			High Round				
Terminal Type		Pin Terminal(2 x 0.5mm)			Pin Terminal(2 x 0.5mm)				
Switch Type		X	Two terminal breakpoints slow moving contact		X	Two terminal breakpoints slow moving contact			
Switch Specifications		2A/36VDC			2A/36VDC				
Contact Resistance		$\leq 50m\Omega$			$\leq 50m\Omega$				
Insulation Resistance		$\geq 1000M\Omega$			$\geq 1000M\Omega$				
Dielectric Strength		2000 VAC			2000 VAC				
Operating Temperature		$-20^{\circ}C \sim +55^{\circ}C$			$-20^{\circ}C \sim +55^{\circ}C$				
Mechanical Life		100	>1,000,000 times		100	>1,000,000 times			
Electrical Life		20	>200,000 times		20	>200,000 times			
Panel Thickness		1 ~ 10mm			1 ~ 10mm				
Torque		5 ~ 14Nm			5 ~ 14Nm				
Operating Pressure		About 4N			About 4N				
Operating Stroke		About 1.5mm			About 1.5mm				
Protection Degree		IP65,IK08			IP65,IK08				
Material	Contact	Silver Alloy			Silver Alloy				
	Button	CD	Stainless Steel: Mirror Surface. CDPattern, Nickel-plated Brass		CD	Stainless Steel: Mirror Surface. CDPattern, Nickel-plated Brass			
	Case	CD	Stainless Steel: Mirror Surface. CDPattern, Nickel-plated Brass		CD	Stainless Steel: Mirror Surface. CDPattern, Nickel-plated Brass			
	Base	PBT			PBT				
	RoHS	Can be made to order			Can be made to order				
Lamp Parameters	Type	Ring-illumination(LED)			Ring-illumination(LED)				
	Rated Voltage	2V/6V/12V/24V/36V			2V/6V/12V/24V/36V				
	Color	R G Y O B W			R G Y O B W				
	Life	50000 Hours			50000 Hours				
Current Limiting Resistor Configuration Table (Recommended Value)		I	Rated Voltage U	6V	12V	24V	36V	Formula $R = \frac{U - U_e}{I_e}$	
			Current Limiting Resistor	R Y O	210 Ω , 1/4W	510 Ω , 1/2W	1.2k Ω , 3/4W		2.2k Ω , 1W
				G B W	160 Ω , 1/4W	460 Ω , 1/2W	1.2k Ω , 3/4W	2.2k Ω , 1W	

YXGQ16F-10D/J/Δ/▲/○

Dot-illumination flat switch



- Mounting Hole Size: $\phi 16\text{mm}$
- Switch Rating: 2A/36VDC
- Contact Configuration: 1NO
- Operation Type: Momentary
- The Front Shape: Dot
- The Crust Material: Stainless Steel/Nickel-plated Brass
- Protection Degree: IP65,IK08

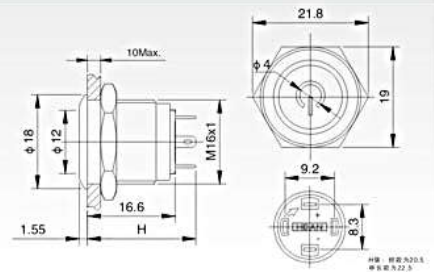


YXGQ16F-10T/J/Δ/▲/○

Ring-illumination Switch



- Mounting Hole Size: $\phi 16\text{mm}$
- Switch Rating: 2A/36VDC
- Contact Configuration: 1NO
- Operation Type: Momentary
- The Front Shape: Ring-illumination Switch
- The Crust Material: Stainless Steel/Nickel-plated Brass
- Protection Degree: IP65,IK08



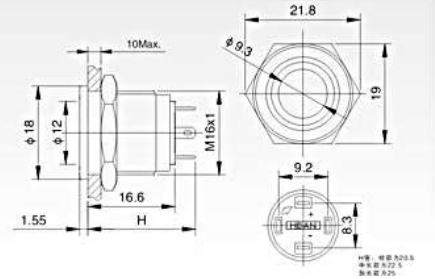
Specifications	YXGQ16F-10D/J/Δ/▲/○	YXGQ16F-10T/J/Δ/▲/○					
The Front Shape	Flat Round	Flat Round					
Terminal Type	Pin Terminal(2 × 0.5mm)	Pin Terminal(2 × 0.5mm)					
Switch Type	X Two terminal breakpoints slow moving contact	X Two terminal breakpoints slow moving contact					
Switch Specifications	2A/36VDC	2A/36VDC					
Contact Resistance	$\leq 50\text{m}\Omega$	$\leq 50\text{m}\Omega$					
Insulation Resistance	$\geq 1000\text{M}\Omega$	$\geq 1000\text{M}\Omega$					
Dielectric Strength	2000 VAC	2000 VAC					
Operating Temperature	$-20^\circ\text{C} \sim +55^\circ\text{C}$	$-20^\circ\text{C} \sim +55^\circ\text{C}$					
Mechanical Life	100 >1,000,000 times	100 >1,000,000 times					
Electrical Life	20 >200,000 times	20 >200,000 times					
Panel Thickness	1 ~ 10mm	1 ~ 10mm					
Torque	5 ~ 14Nm	5 ~ 14Nm					
Operating Pressure	About 4N	About 4N					
Operating Stroke	About 1.5mm	About 1.5mm					
Protection Degree	IP65,IK08	IP65,IK08					
Material	Contact	Silver Alloy					
	Button	CD Stainless Steel: Mirror Surface. CDPattern, Nickel-plated Brass					
	Case	CD Stainless Steel: Mirror Surface. CDPattern, Nickel-plated Brass					
	Base	PBT					
Lamp Parameters	RoHS	Can be made to order					
	Type	Dot illumination (LED)					
	Rated Voltage	2V/6V/12V/24V/36V					
	Life	50000 Hours					
Current Limiting Resistor Configuration Table (Recommended Value)	I	Rated Voltage U	6V	12V	24V	36V	Formula $R = \frac{U-U_e}{I_e}$
	Current Limiting Resistor	R Y O G B W	210 Ω , 1/4W	510 Ω , 1/2W	1.2k Ω , 3/4W	2.2K Ω , 1W	
		G B W	160 Ω , 1/4W	460 Ω , 1/2W	1.2K Ω , 3/4W	2.2K Ω , 1W	

YXGQ16PF-10E/J/Δ/▲/○

Ring-illumination flat switch



- Mounting Hole Size: Φ16mm
- Switch Rating: 2A/36VDC
- Contact Configuration: 1NO(1NC can be custom made)
- Operation Type: Momentary
- The Front Shape: Ring
- The Crust Material: Stainless Steel/Nickel-plated Brass
- Protection Degree: IP65,IK08

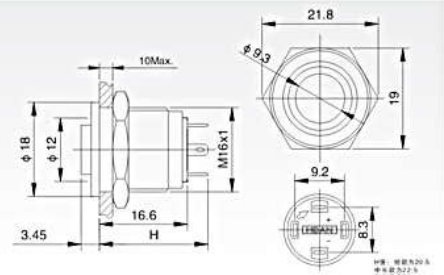


YXGQ16PH-10E/J/Δ/▲/○

Ring-illumination high switch



- Mounting Hole Size: Φ16mm
- Switch Rating: 2A/36VDC
- Contact Configuration: 1NO(1NC can be custom made)
- Operation Type: Momentary
- The Front Shape: Ring
- The Crust Material: Stainless Steel/Nickel-plated Brass
- Protection Degree: IP65,IK08



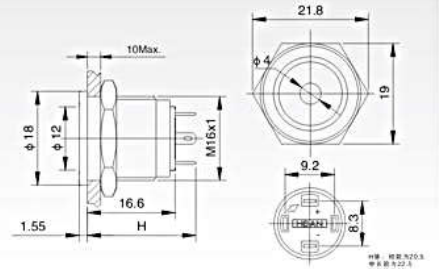
Specifications	YXGQ16PF-10E/J/Δ/▲/○	YXGQ16PH-10E/J/Δ/▲/○					
The Front Shape	Flat Round	High Round					
Terminal Type	Pin Terminal(2×0.5mm)	Pin Terminal(2×0.5mm)					
Switch Type	X Two terminal breakpoints slow moving contact	X Two terminal breakpoints slow moving contact					
Switch Specifications	2A/36VDC	2A/36VDC					
Contact Resistance	≤50mΩ	≤50mΩ					
Insulation Resistance	≥1000MΩ	≥1000MΩ					
Dielectric Strength	2000 VAC	2000 VAC					
Operating Temperature	-20℃ ~ +55℃	-20℃ ~ +55℃					
Mechanical Life	100 >1,000,000 times	100 >1,000,000 times					
Electrical Life	20 >200,000 times	20 >200,000 times					
Panel Thickness	1 ~ 10mm	1 ~ 10mm					
Torque	5 ~ 14Nm	5 ~ 14Nm					
Operating Pressure	About4N	About4N					
Operating Stroke	About 1.5mm	About 1.5mm					
Protection Degree	IP65,IK08	IP65,IK08					
Material	Contact	Silver Alloy					
	Button	CD Stainless Steel: Mirror Surface. CDPattern, Nickel-plated Brass					
	Case	CD Stainless Steel: Mirror Surface. CDPattern, Nickel-plated Brass					
	Base	PBT					
RoHS	Can be made to order	Can be made to order					
Lamp Parameters	Type	Ring-illumination(LED)					
	Rated Voltage	2V/6V/12V/24V/36V					
	Color	R G Y O B W					
	Life	50000 Hours					
Current Limiting Resistor Configuration Table (Recommended Value)	I	Rated Voltage U	6V	12V	24V	36V	Formula $R = \frac{U-U_e}{I_e}$
	Current Limiting Resistor	R Y O G B W	210Ω, 1/4W	510Ω, 1/2W	1.2kΩ, 3/4W	2.2KΩ, 1W	
			G B W	160Ω, 1/4W	460Ω, 1/2W	1.2KΩ, 3/4W	2.2KΩ, 1W

YXGQ16PF-10D/J/Δ/▲/○

Dot-illumination flat switch



- Mounting Hole Size: $\phi 16\text{mm}$
- Switch Rating: 2A/36VDC
- Contact Configuration: 1NO
- Operation Type: Momentary
- The Front Shape: Dot
- The Crust Material: Stainless Steel/Nickel-plated Brass
- Protection Degree: IP65,IK08

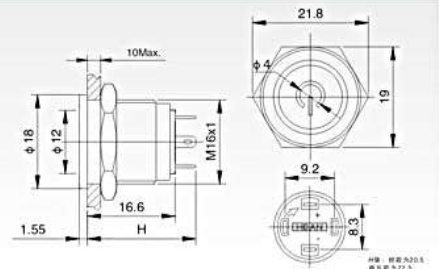


YXGQ16PF-10T/J/Δ/▲/○

Ring-illumination Switch



- Mounting Hole Size: $\phi 16\text{mm}$
- Switch Rating: 2A/36VDC
- Contact Configuration: 1NO
- Operation Type: Momentary
- The Front Shape: Ring-illumination Switch
- The Crust Material: Stainless Steel/Nickel-plated Brass
- Protection Degree: IP65,IK08



Specifications	YXGQ16PF-10D/J/Δ/▲/○	YXGQ16PF-10T/J/Δ/▲/○						
The Front Shape	Flat Round	Flat Round						
Terminal Type	Pin Terminal(2 × 0.5mm)	Pin Terminal(2 × 0.5mm)						
Switch Type	X Two terminal breakpoints slow moving contact	X Two terminal breakpoints slow moving contact						
Switch Specifications	2A/36VDC	2A/36VDC						
Contact Resistance	$\leq 50\text{m}\Omega$	$\leq 50\text{m}\Omega$						
Insulation Resistance	$\geq 1000\text{M}\Omega$	$\geq 1000\text{M}\Omega$						
Dielectric Strength	2000 VAC	2000 VAC						
Operating Temperature	$-20^\circ\text{C} \sim +55^\circ\text{C}$	$-20^\circ\text{C} \sim +55^\circ\text{C}$						
Mechanical Life	100 >1,000,000 times	100 >1,000,000 times						
Electrical Life	20 >200,000 times	20 >200,000 times						
Panel Thickness	1 ~ 10mm	1 ~ 10mm						
Torque	5 ~ 14Nm	5 ~ 14Nm						
Operating Pressure	About 4N	About 4N						
Operating Stroke	About 1.5mm	About 1.5mm						
Protection Degree	IP65,IK08	IP65,IK08						
Material	Contact	Silver Alloy						
	Button	CD Stainless Steel: Mirror Surface. CDPattern, Nickel-plated Brass						
	Case	CD Stainless Steel: Mirror Surface. CDPattern, Nickel-plated Brass						
	Base	PBT						
RoHS	Can be made to order	Can be made to order						
Lamp Parameters	Type	Dot illumination (LED)						
	Rated Voltage	2V/6V/12V/24V/36V						
	Color	R G Y O B W						
	Life	50000 Hours						
Current Limiting Resistor Configuration Table (Recommended Value)	I	Rated Voltage U	6V	12V	24V	36V	Formula $R = \frac{U-U_e}{I_e}$	
	Current Limiting Resistor	R Y O G B W	210 Ω , 1/4W	510 Ω , 1/2W	1.2k Ω , 3/4W	2.2K Ω , 1W		
			G B W	160 Ω , 1/4W	460 Ω , 1/2W	1.2K Ω , 3/4W	2.2K Ω , 1W	

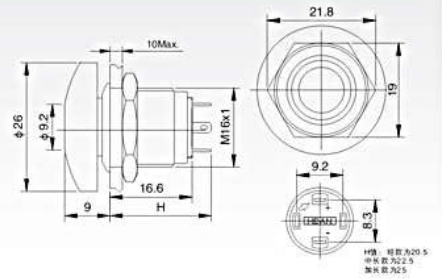
◎ YXGQ16M-10D/J/△/▲/T/★

Dot-illumination Mushroom push button switch



NEW

- Mounting Hole Size: ϕ 16mm
- Switch Rating: 2A/36VDC
- Contact Configuration: 1NO
- Operation Type: Momentary
- The Front Shape: Dot
- The Crust Material: Zn-al Alloy
- Protection Degree: IP65,IK08



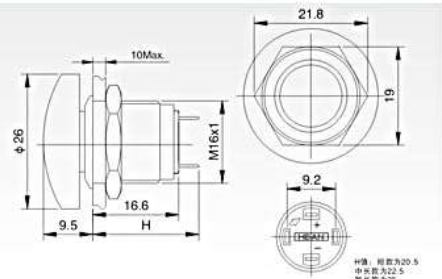
◎ YXGQ16M-10/J/T/★

Mushroom switch



NEW

- Mounting Hole Size: ϕ 16mm
- Switch Rating: 2A/36VDC
- Contact Configuration: 1NO
- Operation Type: Momentary
- The Front Shape: Mushroom
- The Crust Material: Zn-al Alloy
- Protection Degree: IP65,IK08



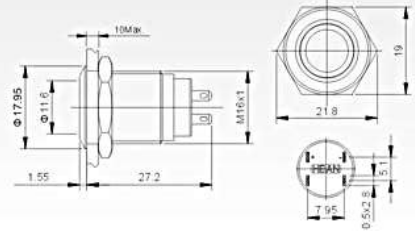
Specifications	YXGQ16M-10D/J/△/▲/T/★	YXGQ16M-10/J/T/★					
The Front Shape	Mushroom Dot	Mushroom Dot					
Terminal Type	Pin Terminal(2 × 0.5mm)	Pin Terminal(2 × 0.5mm)					
Switch Type	X Two terminal breakpoints slow moving contact	X Two terminal breakpoints slow moving contact					
Switch Specifications	2A/36VDC	2A/36VDC					
Contact Resistance	≤ 50 mΩ	≤ 50 mΩ					
Insulation Resistance	≥ 1000MΩ	≥ 1000MΩ					
Dielectric Strength	2000 VAC	2000 VAC					
Operating Temperature	-20℃ ~ +55℃	-20℃ ~ +55℃					
Mechanical Life	100 >1,000,000 times	100 >1,000,000 times					
Electrical Life	20 >200,000 times	20 >200,000 times					
Panel Thickness	1 ~ 10mm	1 ~ 10mm					
Torque	5 ~ 14Nm	5 ~ 14Nm					
Operating Pressure	About 4N	About 4N					
Operating Stroke	About 1.5mm	About 1.5mm					
Protection Degree	IP65,IK08	IP65,IK08					
Material	Contact	Silver Alloy					
	Button	Zn-al Alloy (Colorful head)					
	Case	Zn-al Alloy (Silver white)					
	Base	PBT					
RoHS	Can be made to order	Can be made to order					
Lamp Parameters	Type	Dot illumination (LED)					
	Rated Voltage	2V/6V/12V/24V/36V					
	Color	R G Y O B W					
	Life	Hours					
Current Limiting Resistor Configuration Table (Recommended Value)	I	Rated Voltage U	6V	12V	24V	36V	Formula $R = \frac{U-U_e}{I_e}$
	Current Limiting Resistor	R Y O G B W	210Ω, 1/4W	510Ω, 1/2W	1.2kΩ, 3/4W	2.2KΩ, 1W	
			G B W	160Ω, 1/4W	460Ω, 1/2W	1.2KΩ, 3/4W	2.2KΩ, 1W

YXGQ16F-10EZ/J/Δ/▲/○

Ring-illumination flat switch



- Mounting Hole Size: ϕ 16mm
- Switch Rating: 2A/36VDC
- Contact Configuration: 1NO(1NC can be custom made)
- Operation Type: Momentary
- The Front Shape: Ring
- The Crust Material: Stainless Steel/Nickel-plated Brass
- Protection Degree: IP65,IK08

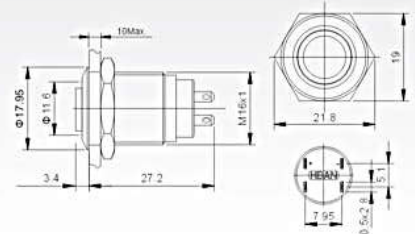


YXGQ16H-10EZ/J/Δ/▲/○

Ring-illumination high switch



- Mounting Hole Size: ϕ 16mm
- Switch Rating: 2A/36VDC
- Contact Configuration: 1NO(1NC can be custom made)
- Operation Type: Momentary
- The Front Shape: Ring
- The Crust Material: Stainless Steel/Nickel-plated Brass
- Protection Degree: IP65,IK08

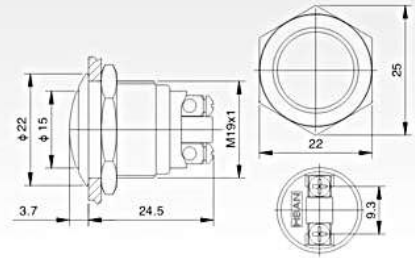


Specifications		YXGQ16F-10EZ/J/Δ/▲/○	YXGQ16H-10EZ/J/Δ/▲/○				
The Front Shape		Flat Round	High Round				
Terminal Type		Pin Terminal(2 × 0.5mm)	Pin Terminal(2 × 0.5mm)				
Switch Type	X	Two terminal breakpoints slow moving contact	X Two terminal breakpoints slow moving contact				
Switch Specifications		2A/36VDC	2A/36VDC				
Contact Resistance		≤ 50mΩ	≤ 50mΩ				
Insulation Resistance		≥ 1000MΩ	≥ 1000MΩ				
Dielectric Strength		2000 VAC	2000 VAC				
Operating Temperature		-20℃ ~ +55℃	-20℃ ~ +55℃				
Mechanical Life		100 >1,000,000 times	100 >1,000,000 times				
Electrical Life		20 >200,000 times	20 >200,000 times				
Panel Thickness		1 ~ 10mm	1 ~ 10mm				
Torque		5 ~ 14Nm	5 ~ 14Nm				
Operating Pressure		About 4N	About 4N				
Operating Stroke		About 1.5mm	About 1.5mm				
Protection Degree		IP65, IK08	IP65, IK08				
Material	Contact	Silver Alloy	Silver Alloy				
	Button	CD Stainless Steel: Mirror Surface. CDPattern, Nickel-plated Brass	CD Stainless Steel: Mirror Surface. CDPattern, Nickel-plated Brass				
	Case	CD Stainless Steel: Mirror Surface. CDPattern, Nickel-plated Brass	CD Stainless Steel: Mirror Surface. CDPattern, Nickel-plated Brass				
	Base	PBT	PBT				
	RoHS	Can be made to order	Can be made to order				
Lamp Parameters	Type	Ring-illumination(LED)	Ring-illumination(LED)				
	Rated Voltage	2V/6V/12V/24V/36V	2V/6V/12V/24V/36V				
	Color	R G Y O B W	R G Y O B W				
	Life	50000 Hours	50000 Hours				
Current Limiting Resistor Configuration Table (Recommended Value)	I	Rated Voltage U	6V	12V	24V	36V	Formula $R = \frac{U-U_e}{I_e}$
	Current Limiting Resistor	R Y O	210Ω, 1/4W	510Ω, 1/2W	1.2kΩ, 3/4W	2.2kΩ, 1W	
		G B W	160Ω, 1/4W	460Ω, 1/2W	1.2kΩ, 3/4W	2.2kΩ, 1W	

YXGQ19B-10/



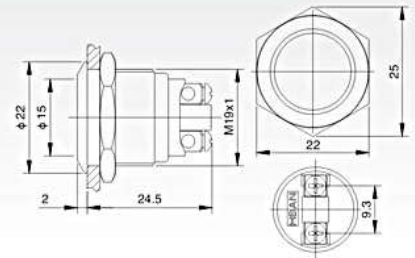
- Mounting Hole Size: ϕ 19mm
- Switch Rating: 2A/36VDC
- Contact Configuration: 1NO(1NC can be custom made)
- Operation Type: Momentary
- The Front Shape: Domed
- The Crust Material: Stainless Steel, Nickel-plated Brass or Gold-plated Brass
- Protection Degree: IP65,IK09



YXGQ19F-10/



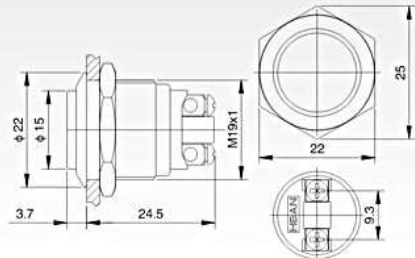
- Mounting Hole Size: ϕ 19mm
- Switch Rating: 2A/36VDC
- Contact Configuration: 1NO(1NC can be custom made)
- Operation Type: Momentary
- The Front Shape: Flat round
- The Crust Material: Stainless Steel, Nickel-plated Brass or Gold-plated Brass
- Protection Degree: IP65,IK09



YXGQ19H-10/



- Mounting Hole Size: ϕ 19mm
- Switch Rating: 2A/36VDC
- Contact Configuration: 1NO(1NC can be custom made)
- Operation Type: Momentary
- The Front Shape: High Round
- The Crust Material: Stainless Steel, Nickel-plated Brass or Gold-plated Brass
- Protection Degree: IP65,IK09

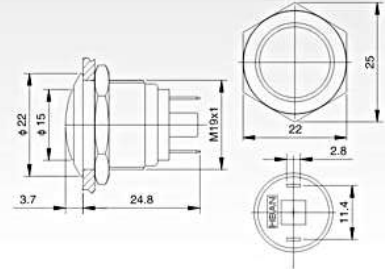


Specifications		YXGQ19B-10/	YXGQ19F-10/	YXGQ19H-10/
The Front Shape		Domed	Domed	Domed
Terminal Type		Screw Terminal	Screw Terminal	Screw Terminal
Switch Type	X	Two terminal breakpoints slow moving contact	X	Two terminal breakpoints slow moving contact
Switch Specifications		2A/36VDC	2A/36VDC	2A/36VDC
Contact Resistance		$\leq 50m\Omega$	$\leq 50m\Omega$	$\leq 50m\Omega$
Insulation Resistance		$\geq 1000M\Omega$	$\geq 1000M\Omega$	$\geq 1000M\Omega$
Dielectric Strength		2000VAC	2000VAC	2000VAC
Operating Temperature		$-20^{\circ}C \sim +55^{\circ}C$	$-20^{\circ}C \sim +55^{\circ}C$	$-20^{\circ}C \sim +55^{\circ}C$
Mechanical Life	100	>1,000,000 times	>1,000,000 times	>1,000,000 times
Electrical Life	20	>200,000 times	>200,000 times	>200,000 times
Panel Thickness		1 ~ 10mm	1 ~ 10mm	1 ~ 10mm
Torque		5 ~ 14Nm	5 ~ 14Nm	5 ~ 14Nm
Operating Pressure		About 4N	About 4N	About 4N
Operating Stroke		About 1.8mm	About 1.8mm	About 1.8mm
Protection Degree		IP65,IK09	IP65,IK09	IP65,IK09
Material	Contact	Silver Alloy	Silver Alloy	Silver Alloy
	Button	CD stainless Steel; Mirror Surface, CD Pattern	CD stainless Steel; Mirror Surface, CD Pattern	CD stainless Steel; Mirror Surface, CD Pattern
	Case	CD stainless Steel; Mirror Surface, CD Pattern Nickel-plated Brass	CD stainless Steel; Mirror Surface, CD Pattern Nickel-plated Brass	CD stainless Steel; Mirror Surface, CD Pattern Nickel-plated Brass
	Base	PBT	PBT	PBT
	RoHS	Can be made to order	Can be made to order	Can be made to order

YXGQ19B-10/J



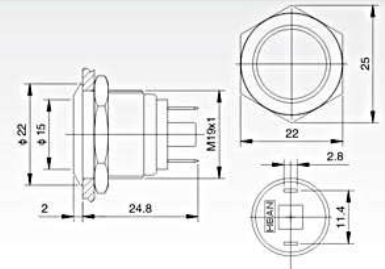
- Mounting Hole Size: $\phi 19\text{mm}$
- Switch Rating: 2A/36VDC
- Contact Configuration: 1NO(1NC can be custom made)
- Operation Type: Momentary
- The Front Shape: Domed
- The Crust Material: Stainless Steel, Nickel-plated Brass or Gold-plated Brass
- Protection Degree: IP65,IK09



YXGQ19F-10/J



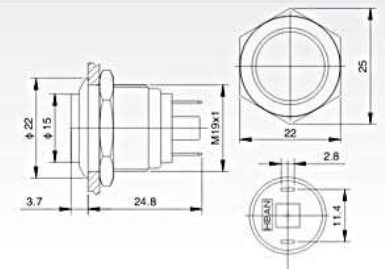
- Mounting Hole Size: $\phi 19\text{mm}$
- Switch Rating: 2A/36VDC
- Contact Configuration: 1NO(1NC can be custom made)
- Operation Type: Momentary
- The Front Shape: Flat round
- The Crust Material: Stainless Steel, Nickel-plated Brass or Gold-plated Brass
- Protection Degree: IP65,IK09



YXGQ19H-10/J



- Mounting Hole Size: $\phi 19\text{mm}$
- Switch Rating: 2A/36VDC
- Contact Configuration: 1NO(1NC can be custom made)
- Operation Type: Momentary
- The Front Shape: High Round
- The Crust Material: Stainless Steel, Nickel-plated Brass or Gold-plated Brass
- Protection Degree: IP65,IK09

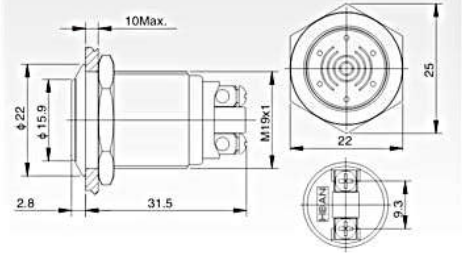


Specifications	YXGQ19B-10/J	YXGQ19F-10/J	YXGQ19H-10/J
The Front Shape	Domed	Domed	Domed
Terminal Type	Pin Terminal(2.8 × 0.5mm)	Pin Terminal(2.8 × 0.5mm)	Pin Terminal(2.8 × 0.5mm)
Switch Type	X Two terminal breakpoints slow moving contact	X Two terminal breakpoints slow moving contact	X Two terminal breakpoints slow moving contact
Switch Specifications	2A/36VDC	2A/36VDC	2A/36VDC
Contact Resistance	≤ 50mΩ	≤ 50mΩ	≤ 50mΩ
Insulation Resistance	≥ 1000MΩ	≥ 1000MΩ	≥ 1000MΩ
Dielectric Strength	2000VAC	2000VAC	2000VAC
Operating Temperature	-20℃ ~ +55℃	-20℃ ~ +55℃	-20℃ ~ +55℃
Mechanical Life	100 >1,000,000 times	100 >1,000,000 times	100 >1,000,000 times
Electrical Life	20 >200,000 times	20 >200,000 times	20 >200,000 times
Panel Thickness	1 ~ 10mm	1 ~ 10mm	1 ~ 10mm
Torque	5 ~ 14Nm	5 ~ 14Nm	5 ~ 14Nm
Operating Pressure	About 4N	About 4N	About 4N
Operating Stroke	About 1.8mm	About 1.8mm	About 1.8mm
Protection Degree	IP65,IK09	IP65,IK09	IP65,IK09
Material	Contact	Silver Alloy	Silver Alloy
	Button	CD tainless Steel; Mirror Surface, CD Pattern	CD tainless Steel; Mirror Surface, CD Pattern
	Case	CD tainless Steel; Mirror Surface, CD Pattern Nickel-plated Brass	CD tainless Steel; Mirror Surface, CD Pattern Nickel-plated Brass
	Base	PBT	PBT
RoHS	Can be made to order	Can be made to order	Can be made to order

YXGQ19-EM/Δ/▲/



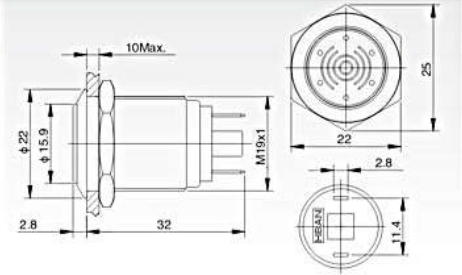
- Mounting Hole Size: Φ 19mm
- Rated Voltage:DC12V/DC24VAC
- Pronunciation Type: Buzzer/Buzzer with illumination:
- Sound Intensity: \approx 85dB(1m)
- Crust Material:Stainless Steel
- Protection Degree:IP50,IK04



YXGQ19-EM/J/Δ/▲/



- Mounting Hole Size: Φ 19mm
- Rated Voltage:DC12V/DC24VAC
- Pronunciation Type: Buzzer/Buzzer with illumination:
- Sound Intensity: \approx 85dB(1m)
- Crust Material:Stainless Steel
- Protection Degree:IP50,IK04

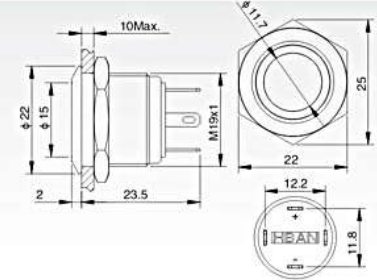


Specifications	YXGQ19-EM/Δ/▲/	YXGQ19-EM/J/Δ/▲/	
The Front Shape	Flat Round with holes	Flat Round with holes	
Terminal Type	Screw Terminal	Pin Terminal(2.8 × 0.5mm)	
Switch Type	---	---	
Switch Specifications	---	---	
Contact Resistance	---	---	
Insulation Resistance	---	---	
Dielectric Strength	2000VAC	2000VAC	
Operating Temperature	-20°C ~ +55 °C	-20°C ~ +55 °C	
Mechanical Life	---	---	
Electrical Life	---	---	
Panel Thickness	1 ~ 10mm	1 ~ 10mm	
Torque	5 ~ 14Nm	5 ~ 14Nm	
Operating Pressure	---	---	
Operating Stroke	---	---	
Protection Degree	IP50,IK04	IP50,IK04	
Material	Contact	---	
	Button	Stainless Steel	Stainless Steel
	Case	Stainless Steel	Stainless Steel
	Base	PBT	PBT
RoHS	Can be made to order	Can be made to order	
Type	Buzzing/Buzzer with illumination	Buzzing/Buzzer with illumination	
Rated Voltage	DC12V/DC24V	DC12V/DC24V	
Lamp Color	R G Y O B W	R G Y O B W	
Sound Intensity	\geq 85dB (1 m)	\geq 85dB (1 m)	

YXGQ19F-10E/J/Δ/▲/⊙



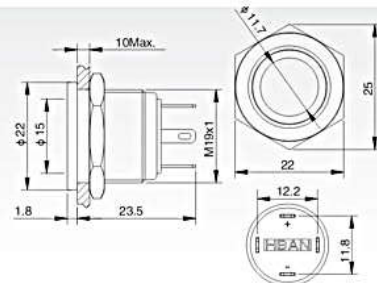
- Mounting Hole Size: ϕ 19mm
- Switch Rating: 2A/36VDC
- Contact Configuration: 1NO(1NC can be custom made)
- Operation Type: Momentary
- The Crust Material: Stainless Steel/Nickel-plated Brass
- The Front Shape: Ring
- Protection Degree: IP65,IK08



YXGQ19P-10E/J/Δ/▲/T



- Mounting Hole Size: ϕ 19mm
- Switch Rating: 2A/36VDC
- Contact Configuration: 1NO(1NC can be custom made)
- Operation Type: Momentary
- The Crust Material: Stainless Steel, Nickel-plated Brass, Zn-al Alloy(Silver white)
- The Front Shape: Ring
- Protection Degree: IP65,IK08



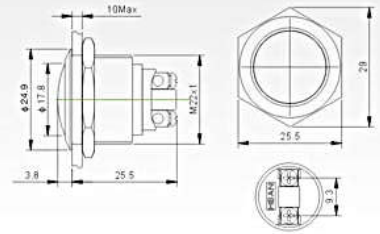
Specifications	YXGQ19F-10E/J/Δ/▲/⊙	YXGQ19P-10E/J/Δ/▲/T						
Terminal Type	Pin Terminal(2.8×0.5mm)	Pin Terminal(2.8×0.5mm)						
Switch Type	X Two terminal breakpoints slow moving contact	X Two terminal breakpoints slow moving contact						
Switch Specifications	2A/36VDC	2A/36VDC						
Contact Resistance	$\leq 50\text{m}\Omega$	$\leq 50\text{m}\Omega$						
Insulation Resistance	$\geq 1000\text{M}\Omega$	$\geq 1000\text{M}\Omega$						
Dielectric Strength	2000 VAC	2000 VAC						
Operating Temperature	-20°C ~ +55°C	-20°C ~ +55°C						
Mechanical Life	100 >1,000,000 times	100 >1,000,000 times						
Electrical Life	20 >200,000 times	20 >200,000 times						
Panel Thickness	1 ~ 10mm	1 ~ 10mm						
Torque	5 ~ 14Nm	5 ~ 14Nm						
Operating Pressure	About 4N	About 4N						
Operating Stroke	About 1.8mm	About 1.8mm						
Protection Degree	IP65,IK08	IP65,IK08						
Material	Contact	Silver Alloy						
	Button	CD Stainless Steel: Mirror Surface, CD Pattern						
	Case	Stainless Steel, Nickel-plated Brass						
	Base	PBT						
RoHS	Can be made to order	Can be made to order						
Lamp Parameters	Type	Ring-illumination(LED)						
	Rated Voltage	2V/6V/12V/24V/36V						
	Color	R G Y O B W						
	Life	50000小时 Hours						
Current Limiting Resistor Configuration Table (Recommended Value)	I	Rated Voltage U	6V	12V	24V	36V	Formula $R = \frac{U-U_e}{I_e}$	
	Current Limiting Resistor	R Y O G B W	210 Ω , 1/4W	510 Ω , 1/2W	1.2k Ω , 3/4W	2.2k Ω , 1W		
			G B W	160 Ω , 1/4W	460 Ω , 1/2W	1.2k Ω , 3/4W	2.2k Ω , 1W	

YXGQ22B-10/

Domed button



- Mounting Hole Size: ϕ 22mm
- Switch Rating: 2A/36VDC
- Contact Configuration: 1NO
- Operation Type: Momentary
- The Front Shape: Domed
- The Crust Material: Stainless Steel, Nickel-plated Brass or Gold-plated Brass
- Protection Degree: IP65,IK09

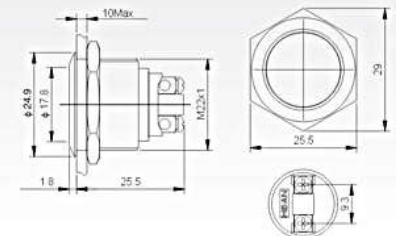


YXGQ22F-10/

Flat round button



- Mounting Hole Size: ϕ 22mm
- Switch Rating: 2A/36VDC
- Contact Configuration: 1NO
- Operation Type: Momentary
- The Front Shape: Flat round
- The Crust Material: Stainless Steel, Nickel-plated Brass or Gold-plated Brass
- Protection Degree: IP65,IK09

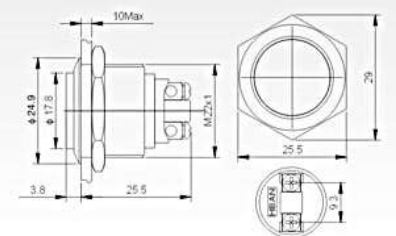


YXGQ22H-10/

High round switch



- Mounting Hole Size: ϕ 22mm
- Switch Rating: 2A/36VDC
- Contact Configuration: 1NO
- Operation Type: Momentary
- The Front Shape: High Round
- The Crust Material: Stainless Steel, Nickel-plated Brass or Gold-plated Brass
- Protection Degree: IP65,IK09

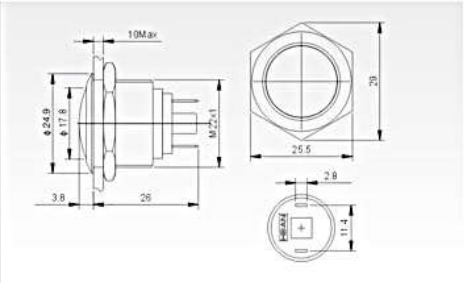


Specifications	YXGQ22B-10/	YXGQ22F-10/	YXGQ22H-10/
The Front Shape	Domed	Domed	Domed
Terminal Type	Screw Terminal	Screw Terminal	Screw Terminal
Switch Type	X Two terminal breakpoints slow moving contact	X Two terminal breakpoints slow moving contact	X Two terminal breakpoints slow moving contact
Switch Specifications	2A/36VDC	2A/36VDC	2A/36VDC
Contact Resistance	$\leq 50m\Omega$	$\leq 50m\Omega$	$\leq 50m\Omega$
Insulation Resistance	$\geq 1000M\Omega$	$\geq 1000M\Omega$	$\geq 1000M\Omega$
Dielectric Strength	2000VAC	2000VAC	2000VAC
Operating Temperature	-20°C ~ +55°C	-20°C ~ +55°C	-20°C ~ +55°C
Mechanical Life	100 >1,000,000 times	100 >1,000,000 times	100 >1,000,000 times
Electrical Life	20 >200,000 times	20 >200,000 times	20 >200,000 times
Panel Thickness	1 ~ 10mm	1 ~ 10mm	1 ~ 10mm
Torque	5 ~ 14Nm	5 ~ 14Nm	5 ~ 14Nm
Operating Pressure	About 4N	About 4N	About 4N
Operating Stroke	About 1.8mm	About 1.8mm	About 1.8mm
Protection Degree	IP65,IK09	IP65,IK09	IP65,IK09
Material	Contact	Silver Alloy	Silver Alloy
	Button	CD tainless Steel; Mirror Surface, CD Pattern	CD tainless Steel; Mirror Surface, CD Pattern
	Case	CD tainless Steel; Mirror Surface, CD Pattern Nickel-plated Brass	CD tainless Steel; Mirror Surface, CD Pattern Nickel-plated Brass
	Base	PBT	PBT
RoHS	Can be made to order	Can be made to order	Can be made to order

YXGQ22B-10/J



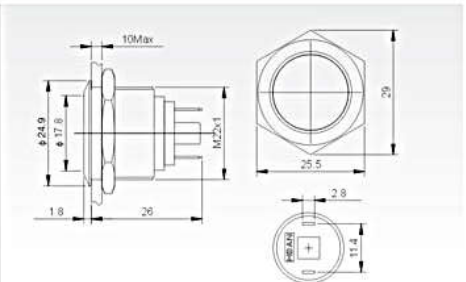
- Mounting Hole Size: $\phi 22\text{mm}$
- Switch Rating: 2A/36VDC
- Contact Configuration: 1NO
- Operation Type: Momentary
- The Front Shape: Domed
- The Crust Material: Stainless Steel, Nickel-plated Brass or Gold-plated Brass
- Protection Degree: IP65,IK09



YXGQ22F-10/J



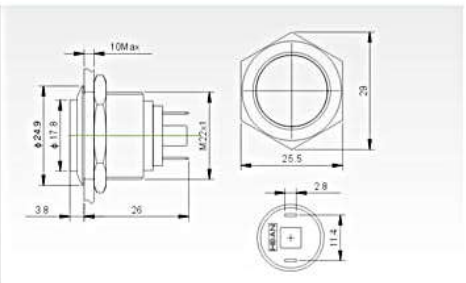
- Mounting Hole Size: $\phi 22\text{mm}$
- Switch Rating: 2A/36VDC
- Contact Configuration: 1NO
- Operation Type: Momentary
- The Front Shape: Flat round
- The Crust Material: Stainless Steel, Nickel-plated Brass or Gold-plated Brass
- Protection Degree: IP65,IK09



YXGQ22H-10/J



- Mounting Hole Size: $\phi 22\text{mm}$
- Switch Rating: 2A/36VDC
- Contact Configuration: 1NO
- Operation Type: Momentary
- The Front Shape: High Round
- The Crust Material: Stainless Steel, Nickel-plated Brass or Gold-plated Brass
- Protection Degree: IP65,IK09



Specifications	YXGQ22B-10/J	YXGQ22F-10/J	YXGQ22H-10/J
The Front Shape	Domed	Domed	Domed
Terminal Type	Pin Terminal(2.8 x 0.5mm)	Pin Terminal(2.8 x 0.5mm)	Pin Terminal(2.8 x 0.5mm)
Switch Type	X Two terminal breakpoints slow moving contact	X Two terminal breakpoints slow moving contact	X Two terminal breakpoints slow moving contact
Switch Specifications	2A/36VDC	2A/36VDC	2A/36VDC
Contact Resistance	$\leq 50\text{m}\Omega$	$\leq 50\text{m}\Omega$	$\leq 50\text{m}\Omega$
Insulation Resistance	$\geq 1000\text{M}\Omega$	$\geq 1000\text{M}\Omega$	$\geq 1000\text{M}\Omega$
Dielectric Strength	2000VAC	2000VAC	2000VAC
Operating Temperature	$-20^{\circ}\text{C} \sim +55^{\circ}\text{C}$	$-20^{\circ}\text{C} \sim +55^{\circ}\text{C}$	$-20^{\circ}\text{C} \sim +55^{\circ}\text{C}$
Mechanical Life	100 >1,000,000 times	100 >1,000,000 times	100 >1,000,000 times
Electrical Life	20 >200,000 times	20 >200,000 times	20 >200,000 times
Panel Thickness	1 ~ 10mm	1 ~ 10mm	1 ~ 10mm
Torque	5 ~ 14Nm	5 ~ 14Nm	5 ~ 14Nm
Operating Pressure	About 4N	About 4N	About 4N
Operating Stroke	About 1.8mm	About 1.8mm	About 1.8mm
Protection Degree	IP65,IK09	IP65,IK09	IP65,IK09
Material	Contact	Silver Alloy	Silver Alloy
	Button	CD tainless Steel; Mirror Surface, CD Pattern	CD tainless Steel; Mirror Surface, CD Pattern
	Case	CD tainless Steel; Mirror Surface, CD Pattern Nickel-plated Brass	CD tainless Steel; Mirror Surface, CD Pattern Nickel-plated Brass
	Base	PBT	PBT
RoHS	Can be made to order	Can be made to order	Can be made to order

Model Explanation

YXS2	GQ	★	-	□	◇	■	/	△	/	▲	/	◎	/	★
Series Number	Modified Code	The Front Shape F Flat Round H High Round C Concave Round G High-concave Round	Contact Configuration 111NO1NC 222NO2NC	Lamp Type D Dot E Ring	Operation Type Z Latching Push Button No letter means momentary push button	Color of lamp or colorful push button R Red G Green Y Yellow O Orange B Blue W White	Lamp Voltage AC/DC6V AC/DC12V AC/DC24V AC/DC110V AC/DC220V Other voltage can be made to order	S: Stainless Steel N: Nickel-plated Brass A: Zn-al Alloy	Color of Colorful push button's head or Case R Red G Green Y Yellow O Orange B Blue N Black					

Note: Please carefully read the product specification, then select the appropriate code according to different symbols in the table.

LED Lamp Specifications

Lamp Type	Bi-directional LED lamp (Universal Current)			Lamp Equivalent Circuit	
Color	R G Y O B W				
Lifetime	50000 Hours (reference value)				
Rated Voltage	AC/DC6V	AC/DC12V	AC/DC110V		
	AC/DC24V	AC/DC36V	AC/DC220V		
Rated Current	about 15mA		about 3mA		
Step-down method	Built-in Resistor				
<p>Adopting Universal Current LED lamp, terminal has no differentiate between positive and negative; LED has built-in protection resistors, no need external connection.</p>					

Note: For unidirectional DC LED lamp can be custom made; other voltage specifications can be special made.

Switch Structure Explanation

Type	C
Diagram	
Symbol	
Explanation	Single breakpoint snap-action contacts switch with three terminals.

Pin Description

Can be configured up to two sets of switches.
 C1, NO1, NC1 C2, NO2, NC2
 C1, NO1, NC1 and C2, NO2, NC2, are a set of switches respectively;

Pin C is utility pin and pin NO is normally open pin, pin NC is normally closed;

+, - pins are LED lamp pins, normal lamp configuration has no difference between positive and negative ;

LED and switch pin are separated, but switch and external circuit can control the LED state by connecting the LED pin.

Installation Effect Preview

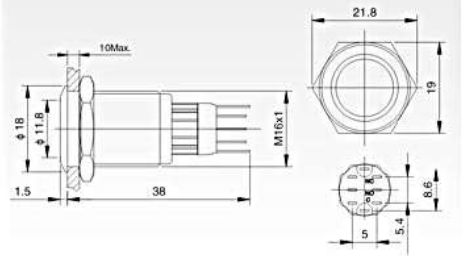


YXS2GQF-□■/○

Flat switch



- Mounting Hole Size: $\phi 16\text{mm}$
- Switch Rating: 3A/250VDC
- Contact Configuration: 1NO1NC/2NO2NC
- Operation Type: Momentary, Latching
- The Front Shape: Flat Round
- The Crust Material: Stainless Steel, Nickel-plated Brass
- Protection Degree: IP40, IP67, IK09

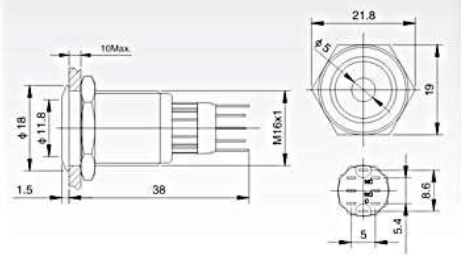


YXS2GQF-□D■/▲/○

Dot-illumination



- Mounting Hole Size: $\phi 16\text{mm}$
- Switch Rating: 3A/250VDC
- Contact Configuration: 1NO1NC/2NO2NC
- Operation Type: Momentary, Latching
- The Front Shape: Flat Round
- The Crust Material: Stainless Steel, Nickel-plated Brass
- Illuminated Type: Dot
- Protection Degree: IP40, IP67, IK09

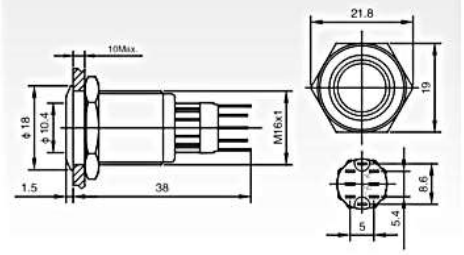


YXS2GQF-□E■/▲/○

Ring-illumination



- Mounting Hole Size: $\phi 16\text{mm}$
- Switch Rating: 3A/250VDC
- Contact Configuration: 1NO1NC/2NO2NC
- Operation Type: Momentary, Latching
- The Front Shape: Flat Round
- The Crust Material: Stainless Steel, Nickel-plated Brass
- Illuminated Type: Ring
- Protection Degree: IP40, IP67, IK09

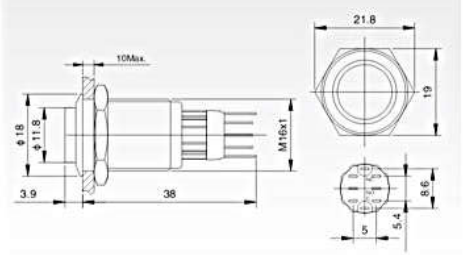


YXS2GQH-□■/○

High round switch



- Mounting Hole Size: $\phi 16\text{mm}$
- Switch Rating: 3A/250VDC
- Contact Configuration: 1NO1NC/2NO2NC
- Operation Type: Momentary, Latching
- The Front Shape: High Round
- The Crust Material: Stainless Steel, Nickel-plated Brass
- Protection Degree: IP40, IP67, IK09

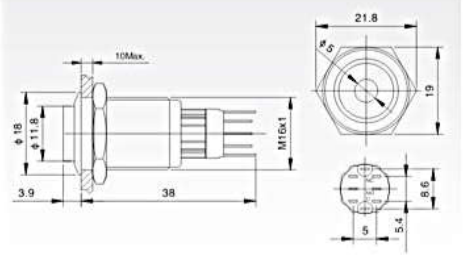


YXS2GQH-□D■/▲/○

High round switch



- Mounting Hole Size: $\phi 16\text{mm}$
- Switch Rating: 3A/250VDC
- Contact Configuration: 1NO1NC/2NO2NC
- Operation Type: Momentary, Latching
- The Front Shape: High Round
- The Crust Material: Stainless Steel, Nickel-plated Brass
- Illuminated Type: Dot
- Protection Degree: IP40, IP67, IK09

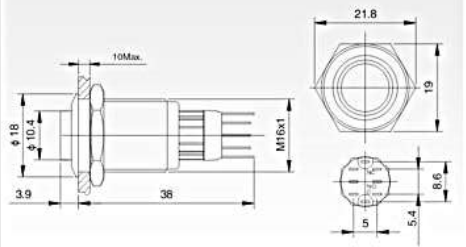


YXS2GQH-□E■/▲/▲/○

Ring-illumination high round switch



- Mounting Hole Size: $\phi 16\text{mm}$
- Switch Rating: 3A/250VDC
- Contact Configuration: 1NO1NC/2NO2NC
- Operation Type: Momentary, Latching
- The Front Shape: High Round
- The Cust Material: Stainless Steel, Nickel-plated Brass
- Illuminated Type: Ring
- Protection Degree: IP40, IP67, IK09

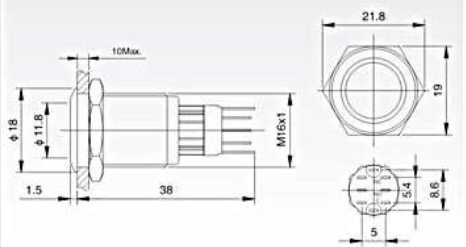


YXS2GQF-□E■/▲/▲/○

Ring-illumination



- Mounting Hole Size: $\phi 16\text{mm}$
- Switch Rating: 3A/250VDC
- Contact Configuration: 1NO1NC/2NO2NC
- Operation Type: Momentary, Latching
- The Front Shape: Flat Round
- The Cust Material: Stainless Steel, Nickel-plated Brass
- Illuminated Type: Ring
- Protection Degree: IP40, IP67, IK09

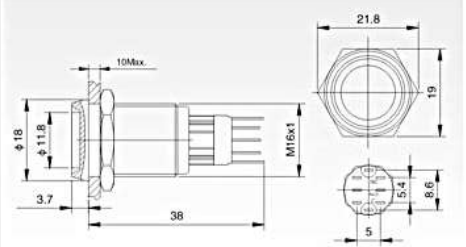


YXS2GQC-□■/○

Concave switch



- Mounting Hole Size: $\phi 16\text{mm}$
- Switch Rating: 3A/250VDC
- Contact Configuration: 1NO1NC/2NO2NC
- Operation Type: Momentary, Latching
- The Front Shape: Concave Round
- The Cust Material: Stainless Steel, Nickel-plated Brass
- Protection Degree: IP40, IP67, IK09

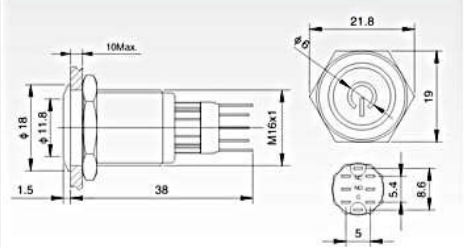


YXS2GQF-□■/○/T

Flat switch



- Mounting Hole Size: $\phi 16\text{mm}$
- Switch Rating: 3A/250VDC
- Contact Configuration: 1NO1NC/2NO2NC
- Operation Type: Momentary, Latching
- The Front Shape: Flat Round (Power symbol)
- The Cust Material: Stainless Steel, Nickel-plated Brass
- Protection Degree: IP40, IP67, IK09

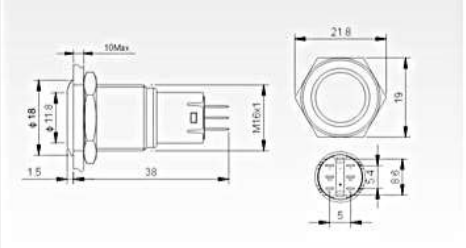


YXS2GQF-□■/○

Flat switch



- Mounting Hole Size: $\phi 16\text{mm}$
- Switch Rating: 3A/250VDC
- Contact Configuration: 1NO1NC/2NO2NC
- Operation Type: Momentary, Latching
- The Front Shape: Flat Round
- The Cust Material: Stainless Steel, Nickel-plated Brass
- Protection Degree: IP40, IP67, IK09

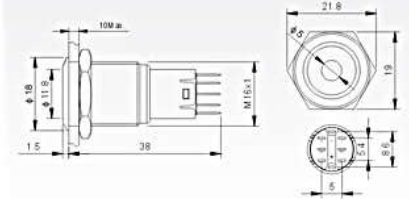


YXS2GQF-□D■/▲/▲/◎

Dot-illumination



- Mounting Hole Size: ϕ 16mm
- Switch Rating: 3A/250VDC
- Contact Configuration: 1NO1NC/2NO2NC
- Operation Type: Momentary, Latching
- The Front Shape: Flat Round
- The Cust Material: Stainless Steel,Nickel-plated Brass
- Illuminated Type: Dot
- Protection Degree: IP40,IP67,IK09

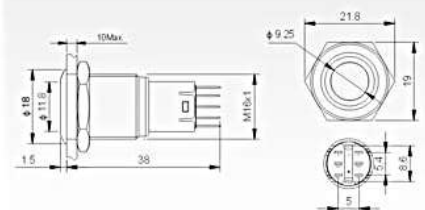


YXS2GQF-□E■/▲/▲/◎

Ring-illumination



- Mounting Hole Size: ϕ 16mm
- Switch Rating: 3A/250VDC
- Contact Configuration: 1NO1NC/2NO2NC
- Operation Type: Momentary, Latching
- The Front Shape: Flat Round
- The Cust Material: Stainless Steel,Nickel-plated Brass
- Illuminated Type: Ring
- Protection Degree: IP40,IP67,IK09

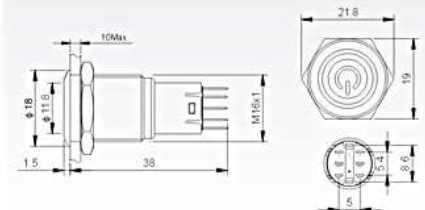


YXS2GQF-□ET■/▲/▲/◎

Ring-illumination Switch



- Mounting Hole Size: ϕ 16mm
- Switch Rating: 3A/250VDC
- Contact Configuration: 1NO1NC/2NO2NC
- Operation Type: Momentary, Latching
- The Front Shape: Flat Round
- The Cust Material: Stainless Steel,Nickel-plated Brass
- Illuminated Type: Ring-illumination Switch
- Protection Degree: IP40,IP67,IK09

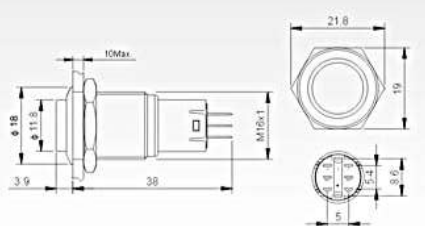


YXS2GQF-□■/◎

Flat switch



- Mounting Hole Size: ϕ 16mm
- Switch Rating: 3A/250VDC
- Contact Configuration: 1NO1NC/2NO2NC
- Operation Type: Momentary, Latching
- The Front Shape: High Round
- The Cust Material: Stainless Steel,Nickel-plated Brass
- Protection Degree: IP40,IP67,IK09

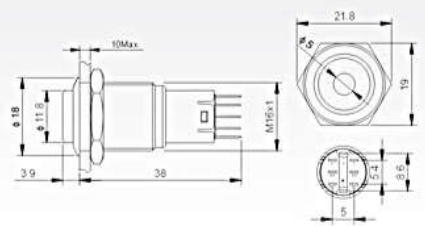


YXS2GQF-□D■/▲/▲/◎

Dot-illumination



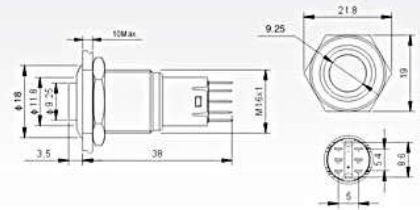
- Mounting Hole Size: ϕ 16mm
- Switch Rating: 3A/250VDC
- Contact Configuration: 1NO1NC/2NO2NC
- Operation Type: Momentary, Latching
- The Front Shape: High Round
- The Cust Material: Stainless Steel,Nickel-plated Brass
- Illuminated Type: Dot
- Protection Degree: IP40,IP67,IK09



YXS2GQF-□E■/△/▲/◎



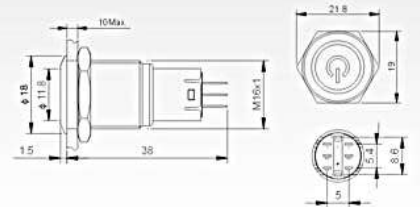
- Mounting Hole Size: ϕ 16mm
- Switch Rating: 3A/250VDC
- Contact Configuration: 1NO1NC/2NO2NC
- Operation Type: Momentary, Latching
- The Front Shape: High Round
- The Cust Material: Stainless Steel/Nickel-plated Brass
- Illuminated Type: Ring
- Protection Degree: IP40,IP67,IK09



YXS2GQF-□ET■/△/▲/◎



- Mounting Hole Size: ϕ 16mm
- Switch Rating: 3A/250VDC
- Contact Configuration: 1NO1NC/2NO2NC
- Operation Type: Momentary, Latching
- The Front Shape: Flat Round
- The Cust Material: Stainless Steel/Nickel-plated Brass
- Illuminated Type: Ring-Illumination Switch
- Protection Degree: IP40/IP67,IK09



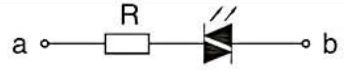
Specifications	YXS2GQF-□■/◎ YXS2GQH-□■/◎ YXS2GQC-□■/◎ YXS2GQG-□■/◎	YXS2GQF-□D■/△/▲/◎ YXS2GQH-□D■/△/▲/◎ YXS2GQF-□■/◎/T	YXS2GQF-□E■/△/▲/◎ YXS2GQH-□E■/△/▲/◎ YXS2GQF-□ET■/△/▲/◎
The Front Shape	Flat Round High Round Concave Round High-concave Round	Flat Round High Round Flat Round (Power symbol)	Flat Round High Round Ring-illumination Switch
Terminal Type	Pin Terminal(2.8 × 0.4mm)	Pin Terminal(2.8 × 0.4mm)	Pin Terminal(2.8 × 0.4mm)
Switch Type	C Single breakpoint snap-action changeover contacts	C Single breakpoint snap-action changeover contacts	C Single breakpoint snap-action changeover contacts
Switch Specifications	Ith:3A Ui:250VAC	Ith:3A Ui:250VAC	Ith:3A Ui:250VAC
Contact Resistance	≤ 50mΩ	≤ 50mΩ	≤ 50mΩ
Insulation Resistance	≥ 1000MΩ	≥ 1000MΩ	≥ 1000MΩ
Dielectric Strength	2000VAC	2000VAC	2000VAC
Operating Temperature	-20℃ ~ +55℃	-20℃ ~ +55℃	-20℃ ~ +55℃
Mechanical Life	20 >200,000 times	20 >200,000 times	20 >200,000 times
Electrical Life	5 >50,000 times	5 >50,000 times	5 >50,000 times
Panel Thickness	1 ~ 10mm	1 ~ 10mm	1 ~ 10mm
Torque	5 ~ 14Nm	5 ~ 14Nm	5 ~ 14Nm
Operating Pressure	2.5~4N	2.5~4N	2.5~4N
Operating Stroke	2.8mm	2.8mm	2.8mm
Protection Degree	IP40/IP67,IK09	IP40/IP67,IK09	IP40/IP67,IK09
Material	Contact	Silver Alloy	Silver Alloy
	Button	CD tainless Steel; Mirror Surface, CD Pattern	CD tainless Steel; Mirror Surface, CD Pattern
	Case	CD tainless Steel; Mirror Surface, CD Pattern Nickel-plated Brass	CD tainless Steel; Mirror Surface, CD Pattern Nickel-plated Brass
	Base	PBT	PBT
Lamp Parameters	RoHS	Can be made to order	Can be made to order
	Type	Non-illuminated	Dot illumination
	Rated Voltage	---	2V/6V/12V/24V/110V/220V
	Color	---	R G Y O B W
	Life	---	50000 hours

Model Explanation

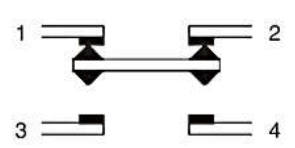

YXS1	GQ	- □	◇	■	/	◆	/	△	/	▲	◎	★
Series Number	Modified Code	Contact Configuration 11 1NO1NC	Lamp Type D Dot E Ring	Operation Type Z Latching Push Button No letter means momentary push button	Terminal Type L Screw Terminal No letter means pin terminal	Color of lamp R Red G Green Y Yellow O Orange B Blue W White	Lamp Voltage AC/DC6V AC/DC12V AC/DC24V AC/DC110V AC/DC220V Other voltage can be made to order	Crust Material S Stainless Steel A Zn-Al Alloy	Color of Colorful push button's head or Case R Red G Green Y Yellow O Orange B Blue N Black			

Note: Please carefully read the product specification, then select the appropriate code according to different symbols in the table.

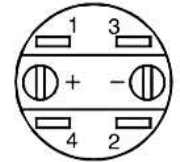
LED Lamp Specifications

Lamp Type	Bi-directional LED lamp (Universal Current)			Lamp Equivalent Circuit	 <p>Adopting Universal Current LED lamp, terminal has no differentiate between positive and negative; LED has built-in protection resistors, no need external connection.</p>
Rated Voltage	AC/DC6V	AC/DC12V	AC/DC110V		
	AC/DC24V	AC/DC36V	AC/DC220V		
Rated Current	about 15mA		about 3mA		
Color	R G Y O B W				
Lifetime	50000	Hours (reference value)			

Switch Structure Explanation

Type	Za
Diagram	
Symbol	
Explanation	Double break snap-action changeover contacts switch with four terminals.

Pin Description

	
1, 2:	NC: pin1, pin2 is normally closed contact NC.
3, 4:	NO: pin3, pin4 is normally open contact NO.
+, - pins are LED lamp pins, normal lamp configuration has no differentiate between positive and negative ;	
LED and switch pin are separated, but switch and external circuit can control the LED state by connecting the LED pin.	

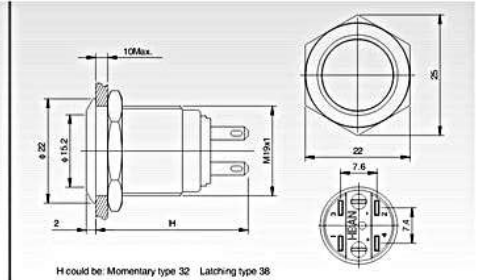
Installation Effect Preview



YXS1GQ-11 ■/○



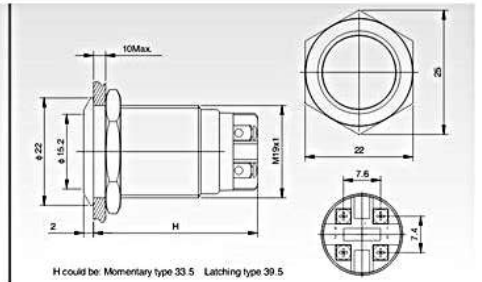
- Mounting Hole Size: Φ 19mm
- Switch Rating: 5A/250VAC
- Contact Configuration: 1NO1NC
- Operation Type: Momentary/Latching
- Crust Material: Stainless Steel
- Protection Degree: IP65, IK09



YXS1GQ-11 ■/L/○



- Mounting Hole Size: Φ 19mm
- Switch Rating: 5A/250VAC
- Contact Configuration: 1NO1NC
- Operation Type: Momentary/Latching
- Crust Material: Stainless Steel
- Protection Degree: IP65, IK09

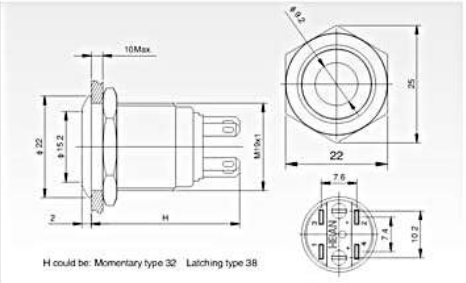


Specifications	YXS1GQ-11 ■/○	YXS1GQ-11 ■/L/○
The Front Shape	Flat Round	Flat Round
Terminal Type	Pin Terminal(2.8 × 0.5mm)	Screw Terminal
Switch Type	Za	Za
Switch Specifications	Ith:5A Ui:250VAC	Ith:5A Ui:250VAC
Contact Resistance	≤ 50mΩ	≤ 50mΩ
Insulation Resistance	≥ 1000MΩ	≥ 1000MΩ
Dielectric Strength	2000VAC	2000VAC
Operating Temperature	-20℃ ~ +55℃	-20℃ ~ +55℃
Mechanical Life	100 >1,000,000 times	100 >1,000,000 times
Electrical Life	5 >200,000 times	5 >200,000 times
Panel Thickness	1 ~ 10mm	1 ~ 10mm
Torque	5 ~ 14Nm	5 ~ 14Nm
Operating Pressure	about 4N	about 4N
Operating Stroke	about 2.5mm	about 2.5mm
Protection Degree	IP65 ,IK09	IP65 ,IK09
Material	Contact	Silver Alloy
	Button	Stainless Steel
	Case	Stainless Steel
	Base	PC
RoHS	Can be made to order	Can be made to order

YXS1GQ-11D ■/△/▲/◎



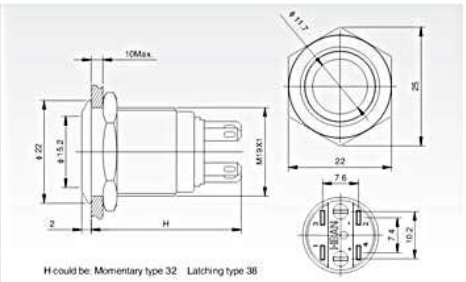
- Mounting Hole Size: Φ 19mm
- Switch Rating: 5A/250VAC
- Contact Configuration: 1NO1NC
- Operation Type: Momentary
- Crust Material: Stainless Steel
- Illuminated Type: Dot
- Protection Degree: IP65, IK09



YXS1GQ-11E ■/△/▲/◎



- Mounting Hole Size: Φ 19mm
- Switch Rating: 5A/250VAC
- Contact Configuration: 1NO1NC
- Operation Type: Momentary
- Crust Material: Stainless Steel
- Illuminated Type: Ring
- Protection Degree: IP65, IK09



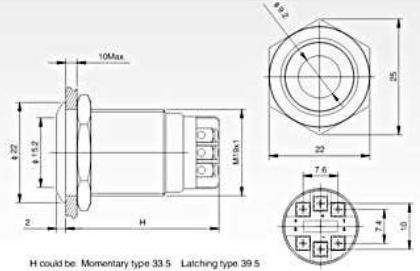
Specifications	YXS1GQ-11D ■/△/▲/◎	YXS1GQ-11E ■/△/▲/◎
The Front Shape	Flat Round	Flat Round
Terminal Type	Pin Terminal(2.8 × 0.5mm)	Pin Terminal(2.8 × 0.5mm)
Switch Type	Za	Za
Switch Specifications	Ith:5A Ui:250VAC	Ith:5A Ui:250VAC
Contact Resistance	≤ 50mΩ	≤ 50mΩ
Insulation Resistance	≥ 1000MΩ	≥ 1000MΩ
Dielectric Strength	2000VAC	2000VAC
Operating Temperature	-20℃ ~ +55℃	-20℃ ~ +55℃
Mechanical Life	100 >1,000,000 times	100 >1,000,000 times
Electrical Life	5 >200,000 times	5 >200,000 times
Panel Thickness	1 ~ 10mm	1 ~ 10mm
Torque	5 ~ 14Nm	5 ~ 14Nm
Operating Pressure	about 4N	about 4N
Operating Stroke	about 2.5mm	about 2.5mm
Protection Degree	IP65 ,IK09	IP65 ,IK09
Material	Contact	Silver Alloy
	Button	Stainless Steel
	Case	Stainless Steel
	Base	PC
Lamp Parameters	RoHS	Can be made to order
	Type	Dot illumination (LED)
	Rated Voltage	6V / 12V / 24V / 110V / 220V
	Color	R G Y O B W
	Life	50000 Hours

YXS1GQ-11D ■/L/Δ/▲/◎

Dot-illumination Switch



- Mounting Hole Size: Φ 19mm
- Switch Rating: 5A/250VAC
- Contact Configuration: 1NO1NC
- Operation Type: Momentary/Latching
- Crust Material: Stainless Steel
- Illuminated Type: Dot
- Protection Degree: IP65, IK09

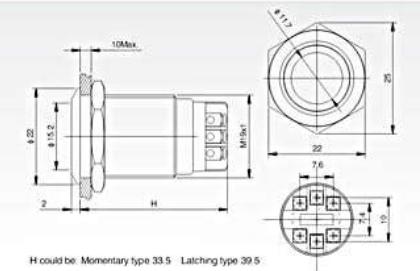


YXS1GQ-11E ■/L/Δ/▲/◎

Ring-illumination Switch



- Mounting Hole Size: Φ 19mm
- Switch Rating: 5A/250VAC
- Contact Configuration: 1NO1NC
- Operation Type: Momentary/Latching
- Crust Material: Stainless Steel
- Illuminated Type: Ring
- Protection Degree: IP65, IK09



Specifications	YXS1GQ-11D ■/L/Δ/▲/◎	YXS1GQ-11E ■/L/Δ/▲/◎
The Front Shape	Flat Round	Flat Round
Terminal Type	Screw Terminal	Screw Terminal
Switch Type	Za	Za
Switch Specifications	Ith:5A Ui:250VAC	Ith:5A Ui:250VAC
Contact Resistance	≤ 50mΩ	≤ 50mΩ
Insulation Resistance	≥ 1000MΩ	≥ 1000MΩ
Dielectric Strength	2000VAC	2000 VAC
Operating Temperature	-20℃ ~ +55℃	-20℃ ~ +55℃
Mechanical Life	100 >1,000,000 times	100 >1,000,000 times
Electrical Life	5 >200,000 times	5 >200,000 times
Panel Thickness	1 ~ 10mm	1 ~ 10mm
Torque	5 ~ 14Nm	5 ~ 14Nm
Operating Pressure	about 4N	about 4N
Operating Stroke	about 2.5mm	about 2.5mm
Protection Degree	IP65 ,IK09	IP65 ,IK09
Material	Contact	Silver Alloy
	Button	Stainless Steel
	Case	Stainless Steel
	Base	PC
Lamp Parameters	RoHS	Can be made to order
	Type	Dot illumination (LED)
	Rated Voltage	6V / 12V / 24V / 110V / 220V
	Color	R G Y O B W
	Life	50000 Hours



Reliance North America

30 Gick Road

Saratoga Springs, NY 12866

518.393.6911

information@RelianceNorthAmerica.com

www.RelianceNorthAmerica.com

RNA
Reliance
North America